

2020

Annual Report

April 20, 2021



Waterford
FOUNDATION, INC.

Waterford Foundation Inc.

P.O. Box 142 Waterford, VA 20197 ♦ 540.882.3018 ♦ www.waterfordfoundation.org ♦ info@waterfordfoundation.org

2020 Board of Directors

Christine Gleckner

President

Jonathan Daniel*

Vice President

Susanne Hale

Secretary

John Caron

Treasurer

Ron Campbell

Sharyn Franck

Bonnie Getty

Annie Goode

Forest Hayes

Sarah Holway

David Hunt

Paul Lawrence

Anna Rathmann

* resigned prior to end of term

Mission

The mission of the Waterford Foundation is to preserve the historic buildings and the open spaces of the National Historic Landmark District of Waterford, Virginia; and through education, to increase the public's knowledge of life and work in an early American rural community.

Committee Chairs and Co-Chairs

Development & Special Projects Anna Rathmann

Education & Collections Sharyn Franck

Local History Outreach Bronwen Souders

Publications.....Kathleen Hughes

Second Street School Program.....Judy Jackson

Fair Business ManagementBonnie Getty

FinanceJohn Caron

Preservation Jonathan Daniel

Land UseAnn Goode

Phillips Farm.....Jonathan Daniel/Sarah Holway

Properties Planning & ManagementDave Hunt

Archives & Local History Collection..... Edith Crockett

Staff

Stephanie Thompson

Executive Director

Paul McCray

Preservation Associate

(February-July)

Liz Hohm

Development Associate

Tracy Kirkman

Fair & Events Director

Lisa Kovatch

Education Associate

Claressa Shipman

Administrative Assistant

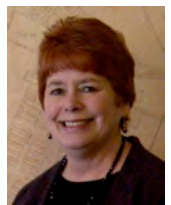
Accountant, Joan Molchan

KAV Accounting, LLC

Retiring Board Members



John Caron joined the Board in 2015, serving on the Finance Committee during tumultuous times after the 2015 Fair cancellation. Undeterred, John stepped into the Treasurer's role in 2016 and has served faithfully in that capacity ever since. He has seen us through some of the most challenging years for the Foundation's finances in recent memory, leading the Finance Committee and keeping the Board well informed. He oversaw the revision of a number of financial policies, and he kept the Board focused on retiring the debt, a goal reached in February 2021. John will be missed as a valued member of the Board, but he has earned a break! We look forward to his continued support as a member of the Finance Committee, ensuring that the Foundation will continue to make steady progress towards better financial sustainability. Thank you, John!



Bonnie Getty returned to the Board in 2015 after a short break, having previously served as Secretary, President, chair of the Development Committee, and chair of the Fair Committee between 2007 and 2013. She returned as chair of the Fair Committee and served again as Secretary for three years. Throughout her time on the Board, Bonnie has been a valuable source of institutional memory during staff and Board turnover. Her steady leadership of the Homes Tour Committee has maintained one of the most treasured features of the annual Waterford Fair, for which she was recognized by Visit Loudoun as the 2016 Tourism Volunteer of the Year. We will miss Bonnie's thoughtful advice on the Board, and we appreciate her many contributions to the Foundation over the past 15 years! Thank you, Bonnie!

President's Report

As I wrote last year's message, the country and the Foundation were just entering the unknown world of the pandemic and its effects on how we conduct business. I am happy to report that one year later, the Foundation, primarily due to staff's efforts, has adapted to operations in this environment and kept the Foundation running. We even achieved a major initiative of the Foundation this past year.



The Board of Directors set as a goal for 2020 to pay off the debt on a line of credit we had been carrying since the renovation of the Old School. New loan terms after bank mergers resulted in a payment schedule that was not affordable and would have required severely restricting the normal activities and operations of the Foundation to make the payments. To raise the funds to pay off the loan, the Board began investigating a possible sale of one of its properties, the Schooley Mill Barn and meadow. While the Board looked into the sale possibility, a group of contributors came forward to make a substantial contribution of \$189,000 towards the outstanding loan balance. The Foundation had the funds to pay the remaining balance of \$10,500, and we were able to pay off the loan on February, 24, 2021. We are deeply grateful to the Schooley Mill Barn Debt Relief contributors who so generously made substantial gifts to the Foundation. We interpret their donations as votes of confidence in the Foundation's ability to continue to serve as stewards of the Schooley Mill Barn property, and we greatly appreciate this support of the Foundation and its preservation efforts.

Apart from paying off the loan, finances remained a primary concern of the Board throughout the year. Our principal income-generating activities were either cancelled or significantly curtailed due to the pandemic. Fortunately, we were able to continue the Waterford Craft School on a limited basis, and we held a virtual Waterford Fair for the first time. While the virtual Fair did not raise the same funds as a typical Fair, we consider it a success and a testament to staff's creativity and adaptability. Following a popular virtual Mill sale in October, we held a similar sale in November to provide an additional opportunity for holiday shopping, to raise additional funds for the Foundation, and to provide revenue for our regular and loyal artisans.

While these adapted activities continued our mission and brought in some revenue, more funds were needed to keep the Foundation solvent in this challenging year. Due to the efforts of our Executive Director and accountant, we applied for and received funds from the CARES Act through our federal, state and county governments to support our administrative costs. Grant funding was used for salaries, for the extra costs associated with maintaining a Covid-safe facility and for IT support and equipment to operate our programs in the virtual environment. We also received a long-term low interest loan from the Small Business Administration to keep our finances solvent that is affordable within the Foundation's budget. As a result of these funding programs and careful management, the Foundation's finances are solvent.

Now that we are beginning to see life returning to a new normal and the resumption of in-person activities on a limited basis, we are anticipating resuming more of our normal fund-raising activities, albeit in a modified format. Additionally, we are exploring new fundraising possibilities. Our Development Committee has been focused on launching a Capital Campaign this year. None of this is possible without our loyal members, friends and volunteers. We will continue to rely on you to provide a majority of the support for the Foundation as we undertake these efforts.

I cannot close without recognizing the dedication and hard work of the Board of Directors. Through the magic (to me) of modern technology, we continued holding regular meetings virtually and accomplished the work of the Foundation in this new environment. I have not met in person with the new Board members appointed last April, and I am looking forward to resuming in-person meetings once it can be done in accordance with guidelines and individual Board members' preferences. The majority of the work performed by Board members is in the committees, and each of the committees continued performing their functions in the virtual environment as well. I thank the Board members and our committee volunteers for their accomplishments this year keeping the Foundation going.

Respectfully,
Christine Gleckner, President

Executive Director's Report

2020 was a surprising and challenging year for the Foundation, like most of the world. We quickly adjusted to online meetings of the staff, Board, and committees when gathering restrictions began in March, and we were fortunate to have recently completed IT system upgrades that facilitated our staff working from home with a reliable connection to our files at the office. Plans for programs and events, bookings for private rentals, and even our 2020 Annual Meeting had to be adapted, postponed, or cancelled as we began to understand the extent of the pandemic. In the end, like the rest of the world, we adjusted as best we could. The Annual Meeting votes were conducted via online survey. The Historic Waterford Trail Run was first postponed until September and then converted to a virtual event. The Fair became the first virtual Waterford Fair, with a live-streaming sale from the Mill, Taste of the Fair packages to bring home, and online educational video content. Waterford Craft School classes were rescheduled, cancelled, or adapted, with new online offerings augmenting in-person classes. Plans for a series of Feast With Friends dinners were scrapped in favor of a personalized Feast With Friends At Home option. And we worked to support the Fair artists whose shows had been cancelled with our online Landmark Artisan Store and Mother's and Father's day gift bag sales featuring local and handmade products.



Our staff worked throughout the year with dedication and an unwavering sense of optimism. Fair and Events Director Tracy Kirkman closely followed the developments of government restrictions and their effects on other large events as we worked to come up with a plan for the Fair. She extensively researched options and trends in virtual events to ensure that the first virtual Waterford Fair would be successful in maintaining our ties with our Fair community during this difficult time. Thanks to her leadership, the virtual Waterford Fair offered entertaining Waterford content to virtual fairgoers from the safety of their homes, supported artists through live-streaming Mill sales, and brought some treasured Waterford Fair tastes and experiences to our supporters. Claressa Shipman joined the staff in January as our Administrative Assistant, and she immediately put her passion for new media to work for the Foundation's outreach on our website, through our newsletter, and on social media. She has been a valuable asset on staff as we transitioned to a virtual format for the Fair that required extensive video content. Claressa keeps the office running smoothly, even when we are all working from home. Paul McCray served as Preservation Associate for the first half of the year. Paul brought a wealth of experience in managing properties under easement following a long career with NoVa Parks. We were sad to see Paul leave mid-year but we appreciate the many contributions he was able to make during his short tenure.

Education Associate Lisa Kovatch joined the staff in spring and worked hard throughout the year to adapt to an evolving situation as she oversaw operations of the Waterford Craft School. Rescheduling and then cancelling classes and processing refunds was a huge job, and yet Lisa still succeeded in connecting with new and returning instructors to create a schedule of online and Covid-safe in-person classes to keep our students and instructors engaged. Lisa also put together our first Waterford Craft School workshops during the Waterford Fair, and we look forward to more such opportunities this year. Liz Hohm continues to serve as our Development Associate, supporting efforts such as the Historic Waterford Trail Run, Feast With Friends, and member outreach. She also initiated outreach efforts to the newly formed Women For Waterford giving circle. Liz has taken a leave of absence to manage at-home learning for her children during the pandemic, but continues to support our development efforts when her time allows. We look forward to having her back at full capacity soon.

Despite the many challenges of the pandemic, we are so pleased to have achieved a long overdue goal of modernizing and strengthening the easement protections on the Schooley Mill barn and meadow. Working with the community, members of the Schooley Mill Debt Relief group, the Virginia Department of Historic Resources, and the Land Trust of Virginia, two easements were recorded at the end of January 2021. We are grateful to the donors who underwrote the costs associated with the new "overlay" easement with the Land Trust of Virginia that further protects the property from certain inappropriate uses and establishes a public connector trail to the Phillips Farm Interpretive Trail. And we are so thankful for the volunteers on our Land Use and Preservation Committees for their hard work in reviewing the language for both easements as we worked to protect this important Waterford property.

We are all hopeful that 2021 will turn out to be better than 2020; however, I am very proud of all that we were able to accomplish this past year. The pandemic forced us to learn new skills, increase our online outreach, and try new things. We are looking forward to welcoming our supporters back to Waterford in person this year, and we are excited to put our new skills and new ideas to work to achieve our mission.

Respectfully,
Stephanie C. Thompson, Executive Director

Development & Special Events

4th Annual Historic Waterford Trail Run Goes Virtual!

Plans for the 4th Annual Historic Waterford Trail Run were well underway in mid-March when pandemic restrictions were put into place. Initially our Run Committee was optimistic that the situation would improve by the end of the summer and postponed the race until September 12th, following the lead of several other area races. But when summer came without a significant improvement in pandemic conditions, the decision was made to convert the run to a virtual event. In the end, 84 runners registered for the virtual race, running a 5k or 10k route of their choice. 21 of the registered runners were Waterford Elementary School students in their Trailblazer running club, completing their race along with family members. While we were disappointed that we could not invite our runners to the Landmark in 2020, we are looking forward to welcoming them back to our trails in September 2021.



A special thanks to all of our 2020 Historic Waterford Trail Run Sponsors: Loudoun Mutual Insurance Company; DiSeveria Management Services; Windows on Washington; Inertial Labs; Chew By Numbers; NV Pools; Office Anesthesia Services, LLC; Debbie Meighan, Realtor; Waterford Reservations, LLC; Country Buick GMC of Leesburg, Evolve Athletics, Fuog / InterBuild, Inc.

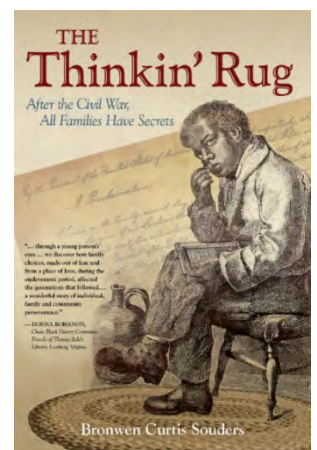
Development volunteers: Sarah Holway, Ed Lehmann, Liz Hohm, Anna Rathmann, Ron Campbell, Margaret Good, Susanne Hale, Inga Woods, Alicia Groncki, Heidi Bickart, Pam Allen, Tina Shah-Sehgal, and Dawn Thomas

Education

Celebrating a new Publication by Waterford Author Bronwen C. Souders: *The Thinkin' Rug*

Many years in the making, *The Thinkin' Rug* was published and released during the virtual Waterford Fair in October. This historical fiction novel by local Waterford historian Bronwen C. Souders tells the story of a Black boy growing up in Waterford in 1880, the same year in which the Second Street School Living History program is set:

It's 1880 and young Leven Thomson discovers startling facts about his close-knit family and community. Why did his mother value a dirty old braided rug so much? What had happened to her brother? Who was the mysterious Dr. Haskins and did he really have supernatural powers? Who was the furtive man in the woods? What did Emancipation Day really stand for? In a year full of transformative events—from house fires, death and childbirth, illness, a hostile farm foreman, old and new friendships, learning in the one-



room segregated schoolhouse, and celebrating freedom—Leven learns the truth about life before the Civil War and experiences the strength of his African-American community.

The first printing of 100 copies of the novel sold quickly during the virtual Waterford Fair, the Home and Holiday Sale and into 2021 on our website. Additional copies have been printed and sales continue on the Waterford Foundation website.

Education volunteers: Sharyn Franck, Ann Belland, Judy Jackson, Edith Crockett, Bronwen Souders, Joe White, and Kathleen Hughes

Black History and the Second Street School

Accelerations in the fight for racial justice sparked by the death of George Floyd increased the public's need and appetite for Black history. The Waterford Foundation responded with increased Black history outreach in 2020.

Due to pandemic restrictions, the Second Street School Living History Program was on hiatus for the year. During this time, and with the support of our generous Give Choose donors and the Women For Waterford, we expanded our educational content on the Waterford Foundation website. The Second Street School Interactive Program and the African American Experience Interactive were both restored to our website to support at-home learning.

African American Experience Interactive Restored to Website

Many years ago the Waterford Foundation received a grant to create interactive web content detailing the African-American experience in Waterford throughout its history. An easy-to-navigate map was created on which users could click on one of five sites in Waterford with significant connections to the African American community. Three of the sites featured a short video and interactive content, while all five sites featured a gallery of historic and modern photographs. This project was the culmination of countless hours of work by local historians, volunteers, and multimedia consultants.



Over the years, as technology marched forward, parts of the interactive map stopped working. Through the generosity of our Give Choose donors and the Women For Waterford, the African American Experience interactive was restored to our website in summer 2020. Find it here: <https://www.waterfordfoundation.org/African-American-Experience/title.html>

On the map, click on one of the five sites to learn more: the Second Street School, the John Wesley Church, Union Cemetery, the Claggett House and the Old Mill. Watch videos featuring former students and Waterford descendants discuss their experiences in Waterford in the 20th century, and learn about the Mill and its connection to Waterford's African-American community. See historic photographs and meet members of the John Wesley church congregation. Take a short quiz at the Second Street School to see if you know what students in 1880 were expected to know.

2020 Waterford Craft School

First Virtual Classes

The Craft School reached a milestone in 2020, hosting its very first virtual class. *Watercolor Magic for Kids, Ages 6 - 10* was a success! After receiving brown paper parcels containing their art supply kits, students met with DC-based instructor Paula Kaufman, for 1/2 hour each day for 5 days, putting watercolor vocabulary terms into practice on their thick, textured paper. Students completed one project per class, exploring techniques such as mixing paint colors, resisting with oil pastels, blowing with drinking straws, and sprinkling salt crystals for added effect. By the end of the week, jellyfish tentacles stretched out across watery landscapes and spaceships shot through starry night skies.



"My favorite parts were using oil pastels with watercolors and having fun!"
Bobby, age 6.

"It was very, very fun, and I liked using the salt."
Laura, age 9

The class has ended, but the kits included ample supplies for honing newly acquired skills. Creativity is blossoming during this truly unique summer!

Socially distanced in-person classes

On a warm July day, 8 masked students met in the air conditioned Old School auditorium for *Making a Floorcloth from Start to Finish* with Waterford Landmark Artisan, Grace Rochford. With natural light flooding in from the doors onto the Old School patio, blank cotton canvases on well-spaced tables were soon covered with precise lines made with t-squares and tape. With durability in mind, multiple layers of paint were hastened with hair dryers. It was an intensive day (that even involved a blown fuse!), but each participant completed an original, useful work of domestic art.

We are so grateful for the patience both our students and instructors have shown us, as our regular 2020 Craft School season and a few Virtual Fair workshops were rescheduled into the fall. October *Splint Seat Weaving* and *Stained Glass 101* students awoke to a frost, but temperatures rose by the afternoon, enabling students from both classes to work on aspects of their projects outside, under a beautifully sunny, autumn sky. Everyone left with a completed project, a sense of accomplishment, and a keen interest to continue honing their newly acquired skills.



Colonial Camp

In August, the excited voices of 10 campers ages 8 - 12 rang out in and around the Old School. We have a pretty good feeling that Colonial Camp 2020 will prove to be especially memorable, offering a unique release from the social restrictions young people are enduring this year. Bootmaker and Instructor Brett Walker and his able assistant and wife, Wendy, returned to Waterford to share their passion for Colonial-era living. From erecting a sapling lean-to, baking bread in a wood-fired oven, and practicing penmanship with a goose quill, to singing songs and tossing hay bales, the week was informative and fun, cultivating life skills that are relevant today. We extend special thanks to villagers Susan and Richard Rogers, Linda Landreth, and Annie and Joe Goode for their welcoming and informative farm visits, to Matt Rasnake and Sarah Holway for donating firewood for the outdoor bread oven, to Stephanie and Bob Thompson for the use of their tools, to Inga Woods for providing homemade bread dough, and to Liz and Pete Hohm for providing the homestay and cream for the butter churning.



Waterford Craft School at the 76th Virtual Fair

The Fair's online format provided an opportunity to supplement the attendees' experience with hands-on learning. We offered 8 live classes, a combination of pre-recorded tutorials, online and in-person formats. Materials kits were picked up by or sent to students across the U.S., who met their instructors for live Q&As in online meeting spaces. We continue to use some of the tutorials as evergreen content. 9 students also met on the Old School grounds for a 2-day, in-person session of *Dry Stone Fence Construction* to continue working on the Fairfax St entrance.



2020 Waterford Craft School instructors: Michael Aylward, Jerry Bond, Allen Cochran, Jill Evans-Kavaljian, Pamela Foster, Paula Kaufman, Tracy Kirkman, Lisa Parmer-Ditty, Rebekah L. Smith, Grace Rochford, Brett Walker, and Megan Wakefield.

Waterford Craft School volunteers: Susanne Hale, Sharyn Franck, Christine Gleckner, Wendy Walker, Liz & Pete Hohm, Bob Thompson, Inga Woods, Susan and Richard Rogers, Linda Landreth, Annie and Joe Goode, Matt Rasnake, Sarah Holway, and Margaret Good.

2020 Waterford Fair

In 2020, like with so many other events, the 76th Waterford Fair pivoted to a virtual event. We are thankful for the artisans, entertainers, Craft School instructors and living historians, who jumped on board to make the event possible!

We hope you got a chance to view the videos that were included in the virtual Fair, shop the Old Mill online sale, enjoyed one (or more) of the “Taste of the Fair” packages, delve back in to Waterford's commercial past through the interactive map and video series, or took an online craft class.

Many new partnerships were forged in 2020. This was the first year to have Craft School Workshops (7) during the Fair. We will continue to offer classes during future Fairs -- it is a great way to cross promote the Craft School and introduce students to the Fair. We also created “Taste of the Fair” packages and partnered with Two Twisted Posts Winery for a live Zoom tasting, had exclusive videos, from Georges Mill Farm and Walking Wild Herbs, to go with our breakfast goodies, and had a behind the scenes video tour of Parkway Brewing Company for the beer tasting package. Our signature Fair cocktail featured items from Catoctin Creek Distillery and Fabboli Cellars and was prominently featured in both organization's social media campaigns. We also created a StoryCorps page for fairgoers to record special memories of Fairs gone by. StoryCorps is a national program that archives the recorded stories at the Library of Congress. We will continue to promote this throughout the year and during future Fairs.

Receiving a grant to purchase video equipment, Staff was able to produce 45+ videos for the Fair. It was definitely a team effort! The virtual Fair contained free video content as well as videos that were only available to ticket holders, such as Waterford's commercial buildings, interviews with Miss Nickens at the Second Street School and musical entertainment.

We were excited to invite 40 artisans to participate in the Old Mill Online Sale, of which 30 accepted. We held seven YouTube Livestream sales throughout Fair weekend, giving participants the opportunity to see the offerings before purchasing. The revenue generated from the sale was great enough that staff created a holiday event “The Landmark Home & Holiday Sale”. Again, we had just over 30 artisans (including 8 artists) participate with the online sale, which took place over 10 days, culminating in a holiday kick off. On December 5th purchases were picked up while the music students of Teague Piano performed holiday favorites under a tent outside the John Wesley Church. Village walking tours, a photo op spot and a wreath making class were also featured.

Feedback from attendees and artisans was positive. This comment came in from a California attendee:

“That is amazing! Thank you so much. I have been going to Waterford for 40 years since I was a kid, and my grandmother took my mom when she was a kid, 3 generations of women in my family have been going since time immemorial. Fall is not fall without Waterford! Thank you.”



Waterford Fair Committee: Bonnie Getty, Susan Sutter, Roy Chaudet, Kathleen Hughes, Betsy Gibson, Jackie Gosses, Julia Thompson, Hans Hommels, Isaac Johnson, Ed Lehmann, Debbie Morris, Jim Schnaible and Dara Rivera.

Virtual Fair and Home & Holiday Sale Volunteers: Sharyn Franck, Carol Davis, Robin Jones, Monica Horton, Jill Kadish, Jonathan Daniel, Joe White, Betsy Coffey-Chaudet, Kym Peacock, Chet Gibson, Jim Gosses, Sue Bremer, Ron Cambell, Liz Hohm, Pete Hohm, Margaret Good, Dave Hunt, Simon Thomas, Linda Landreth, Don Rawlings, Grayson Rawlings, Trevor MacDuffee, Bronwen Souders, Steve Paradis, Melissa Sutton, Susanne Hale, Ann Belland, Peggy Bednarik, Debra Bourget, Elyssa Wood, Victoria Avery, Christine Gleckner, Bruce Ferguson, John Caron, Caroline Malone, Paul Laurence, Beth Stitley, Nancy Doane, Melanie Ricart, Kiki Ricart, Jacob Blatz, Elaina Sorochnyskyj-Young, Tim Thomas, and Beverly

Preservation

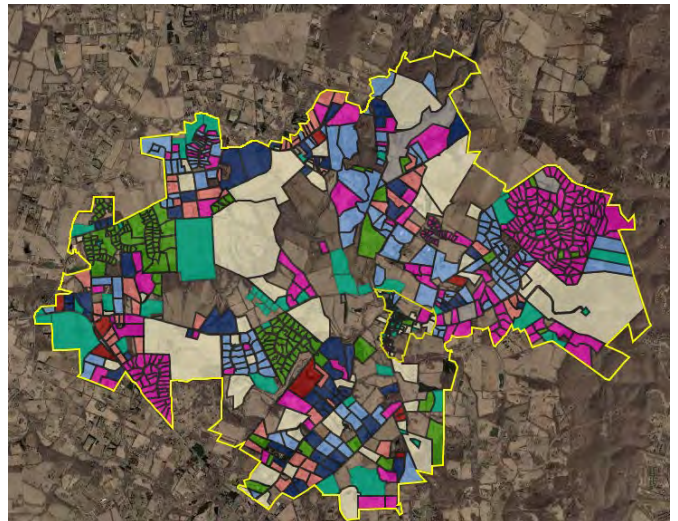
Archives and Local History Collection

Despite the pandemic, Archives volunteers have continued their work to organize, catalog, and preserve artifacts from Waterford and the Foundation's history. While in-person meetings were prohibited, volunteers worked remotely to develop a thorough policy and procedures manual that will guide the management of the Archives and Local History Collection in the future. We look forward to the fruits of their labor in the near future that will allow more efficient research and better sharing of the treasures in the Foundation's collections.

Archives Volunteers: Edith Crockett, Jonathan Daniel, Sharyn Franck, Ann Belland, and Bronwen Souders

High School Volunteer Creates Dashboard Map of Western Loudoun Development

Every so often we have an opportunity to work with young volunteers eager to help preserve our Landmark. In Spring 2020, Nick Spokes created a Dashboard Map of Western Loudoun Development (linked below) as a final project for his Geospatial class at Woodgrove High School. He is a 2020 graduate of Woodgrove and is now attending West Virginia University as a freshman, majoring in cybersecurity. Nick hopes one day to work in the cybersecurity industry, doing things such as penetration testing. He is a former member of Boy Scout Troop 969 in Hamilton, and recently earned his Eagle rank in February. Nick did his Eagle project for the village when he built a gate and repaired the fence at the Water Street Meadow. Nick and his family reside very close to Waterford in the Wheatland area, and they find every excuse to visit the town that they can since it is such a beautiful environment.





"During the process of making this project, I not only learned a lot about the software but also a lot about the town and the surrounding area. I was pleasantly surprised to find that Waterford was the least developed town in Loudoun. The town truly is a hidden gem." ~ Nick Spokes

[Click here](#) to begin exploring the Dashboard Map of Western Loudoun Development and explore the timeline of development in Loudoun County!

Phillips Farm

Phillips Farm Sees an Increase in Visitors During Pandemic

Since the COVID-19 pandemic closed workplaces, schools, and parks, we experienced an increase in visitors on the Phillips Farm Interpretive Trail. We are grateful to have been able to continue to provide this valuable natural resource to the public in a time when access to the outdoors was limited for many.

Phillips Farm was all a-flutter with butterflies and butterfly counters on Saturday August 1st. Every summer, our partner organization, the Loudoun Wildlife Conservancy (LWC) coordinates the Loudoun County Annual Butterfly Count and reports the data to the North American Butterfly Association which then analyzes the health of butterfly populations and their habitats. The good news is that the same number of species were counted as last year (25 total) and the number of individual butterflies was higher this year (426 compared to 329). Meadow fritillaries were abundant and the monarch butterfly numbers held steady at 18 individuals this year and last. When meadow fritillaries are caterpillars they feed on violets and, as adults, their nectar sources include the black eyed susan and ox-eyed daisy. Monarch caterpillars feed exclusively on milkweed leaves. The nectar-rich plants they prefer as adults include Joe-pye weed and New York ironweed. All these plants are readily available to butterflies on the Phillips Farm thanks to our careful management on behalf of wildlife habitat and open space.



The Farm also provided a venue for a unique outdoor learning experience for a small group of pre-K through 12 students. Volunteer Miriam Westervelt led the group of 10 students through once per month Nature Journaling activities beginning in the fall, and the group has continued into spring 2021. The students have learned to identify trees and birds, to create sound maps and blind contour drawings, to monitor amphibians and bluebird nests, and many more fun activities that make the most of the natural resources available on the Phillips Farm.

Special thanks to our Phillips Farm volunteers: Phillips Farm Volunteers: Jonathan Daniel, Sarah Holway, Phil Paschall, Miriam Westervelt, Jim McIntosh, Joe Coleman, Joe Goode, Ann Belland, Susan Honig-Rogers, Chris White, and John Souders

Properties & Planning Management

Mill Stabilization Project Moves Forward into the Design Phase

In January of 2020, Loudoun County Department of Transportation and Capital Infrastructure staff, project architects and structural engineers, and Waterford Foundation staff met at the Mill to kick off the design phase of the Mill Stabilization Project.



To prepare for the upcoming construction phase and make room for site surveys, volunteers worked over several Saturdays this summer to completely clear the building of the furniture, display materials and decorations used during the Fair in the Old Mill Shop. To further clear the building, staff found a new home for the old roller milling equipment that had been donated in the 1990s from mill in Banco, Virginia. The Historic Structure Report created in the first phase of this restoration project recommended removal of the roller milling machinery because it was causing damage to the building, and it was not appropriate for the recommended period of interpretation of the mill going forward. In its new home at Wade's Mill in Raphine, VA, the roller milling equipment will be used in working educational exhibits.

The newly empty mill was a great space to host the streaming online sales during the virtual Fair and the Home and Holiday Sale, providing ample space to house artists inventory while showing off the architecture of the historic building.

Properties Volunteers: Dave Hunt, Ed Lehmann, Jonathan Daniel, Ann Belland, Annie Goode, Sarah Holway, Lauren Hunt, Joe White, Chris White, and Lee Spangler

Land Use

Easement Update Project Continues

The Waterford Foundation began an easement program in the early 1970s, both by granting easements on Foundation-owned property and by encouraging other Waterford property owners to place their properties under easement. Today, Waterford has one of the largest percentages of land under easement in all of Virginia. Easements in and around Waterford have been granted to several easement holders, including: The National Trust for Historic Preservation, Virginia Department of Historic Resources, Loudoun County, Virginia Outdoors Foundation, and the Land Trust of Virginia. These easement holders conduct periodic monitoring inspections of the properties and work with current property owners to ensure that the properties are maintained in accordance with the terms of the easement.

Some Waterford easements dating back to the early 1970s were among the first such easements recorded and include outdated or nonstandard language. Because of this, the Foundation's Land Use Committee has been working with our easement holders for several years to review and amend our easements to bring them up to modern standards. During the course of their review, Land Use discovered that the original 1975 easement on the Schooley Mill Barn property granted to the Virginia Outdoors Foundation (VOF) protected the open spaces of the property but did not include protections for the historic barn structure. Working with VOF and the Virginia Department of Historic Resources (VDHR), the Foundation had the VOF easement assigned to VDHR in 2013 so that the easement could be amended to include protection of the barn. This amendment was a priority project

in 2020 and was concluded with the recording of an amended and restated easement in January 2021 (see below).

An amendment is also underway with VDHR on the Water Street Meadow, and the Chair Factory easement with VDHR was amended in 2010. After these amendments are complete, the Foundation plans to place the Bond Street Barn and Tanyard under easement, the only remaining Foundation property not currently under easement.

Two New Easements Protect the Schooley Mill Property:

After working most of the year to establish new easements on the Schooley Mill Barn property, we are pleased to report that the new easements were recorded in the Loudoun County land records in late January 2021. In addition to the amended easement held by the Virginia Department of Historic Resources (VDHR), a new overlay easement was recorded to strengthen protections on the property. The overlay easement is held by the Land Trust of Virginia (LTV). Here are a few highlights of these new easements:



VDHR Amended and Restated Deed of Easement

- Replaces the 1975 easement that was originally held by the Virginia Outdoors Foundation and later transferred to VDHR in 2013
- Prohibits subdivision of the 20 acre parcel of land
- Protects the barn structure from demolition and limits the ability to build new structures.
- Establishes a new riparian protection zone around Balls Run, a perennial stream that drains into Catoctin Creek on the Phillips Farm
- Prohibits commercial activities with the exception of agriculture and a limited number of fundraising events (including the Waterford Fair)

Land Trust of Virginia Deed of Overlay Conservation Easement

- Further limits commercial/agricultural activities to preclude the establishment of wineries, breweries, distilleries and restaurants
- Establishes the Phillips Farm Connector Trail, a publicly accessible recreational trail that provides pedestrian access from Janney Street to the Phillips Farm Interpretive Trail

This project would not have been possible without the support of many. We appreciate the dedication of volunteers on our Preservation Committee and its Land Use Subcommittee in reviewing and advising on the new easement language. We are grateful to our partners at the Virginia Department of Historic Resources and the Land Trust of Virginia for working with us to create these new documents that will protect the property in perpetuity. And most of all, we are exceedingly grateful for the support of the Schooley Mill Barn Property Debt Relief Group, who provided the monetary support we needed to be able to retain the Schooley Mill Barn property while also retiring the Foundation's Line of Credit debt.

Land Use Volunteers: Annie Goode, Jeff Huber, Phil Paschall, Susan Rogers, Frank Kenneson, Francie Fetzer, Forest Hayes, Karl Riedel, and Chris Wood

Lifetime Members

Until 1993, a lifetime member designation was conferred on individuals who contributed \$1,000 or more, or granted an easement on a property within the National Historic Landmark. We thank these generous donors.

Mr. Patrick Anderson
Mr. and Mrs. David Banker
Ms. Jill P. Beach
Ms. Geraldine Brooks
Mr. and Mrs. William T. Burch
Mr. Forrest Byers
Ms. Ellen Casolaro
Ms. Constance K. Chamberlain
Mr. and Mrs. John C. Chamberlain
Mr. Robert W. Chamberlain
Mr. and Mrs. David W. Chamberlain
Mrs. Robert. H. Charles
Ms. Rachel Chewning
Mr. and Mrs. Bruce E. Clendenin
Ms. Elizabeth O. Colton
Mr. and Mrs. W. Bowman Cutter III
Mr. and Mrs. Edward Davis
Mr. John DeCourcy

Mrs. Ted C. Dillon
Mr. and Mrs. John J. Donovan, Jr.
Ms. Mercedes Eyssell
Mr. and Mrs. Bertram R. Firestone
Mr. Timothy W. Glidden
Mrs. C. David Fuller
Mr. and Mrs. Kevin Goeller
Mr. Jose Gomez
Mr. and Mrs. H.D. Harper
Brig. Gen. Richard G. Head
Ms. Elaine Head
Mrs. Daniel B. Holland
Mrs. William Holter
Mr. and Mrs. Lyman W. Hull
Mr. Thomas G. Jewell
Ms. Ellen J. Kellner
Mr. and Mrs. H. Layton Laws, Jr.
Mr. and Mrs. Douglass Lea

Ms. Lang E. Lloveras
Mr. Spencer H. MacCallum
Mr. Timothy McLean
Rev. and Mrs. W. Brown Morton III
Mrs. L. Carlton Mosteller
Mr. and Mrs. Charles R. Norris
Mr. and Mrs. F. Lawrence Oaks
Mr. and Mrs. Paul E. Rose
Mr. and Mrs. Eugene Scheel
Ms. Ruth Smith
Mrs. Robert H. Smith
Mrs. Pamela L. Storch
Mr. Leo S. Sullivan
Ms. Gladys Tartiere
Mr. Parker Westbrook
Mrs. James L. Wiley
Ms. Rosemary Wood

Business and Organization Donors

Atlantic Union Bank
Beverly Teague Piano
Catoctin Creek Distillery
Catoctin Presbyterian Church
Cedars Foundation
CertaPro Painters
Charles Delmar Foundation
Chew By Numbers
Country Buick GMC
County of Loudoun
Debbie Meighan, Realtor
Devilsbliss Farm & Vineyard
DiSeveria Management Services
Evolve Athletics
ExxonMobile Foundation
FBB Capital Partners

Fabbioli Cellars
Georges Mill Farm
Interior Labs
Leesburg Garden Club
Loudoun Mutual Insurance Co.
Moutoux Orchards
NOVEC
NV Pools
Office of Anesthesia Services
Parkway Brewing Company
StoryCorps
Valley Energy
Virginia Tourism Corporation
Visit Loudoun
Waterford Concert Series
Waterford Reservations

Waterford Market
Waterford WISP
Wegmans Food Markets
Windows on Washington
WMT Enterprises

Matching Gifts

The Waterford Foundation is grateful to the corporations who offer matching gift programs to their employees.

ExxonMobil Foundation

Grantors

County of Loudoun
Visit Loudoun
Virginia Humanities
Virginia Tourism Corporation

Strategic Partners

The American Chestnut Foundation
Boy Scouts of America
Catoctin Presbyterian Church
Community Foundation of Loudoun and Northern Fauquier
The Community Music School of the Piedmont
The Commonwealth Transportation Board
County of Loudoun
Journey Through Hallowed Ground
Land Trust Alliance
Land Trust of Virginia
Loudoun Archaeological Foundation
Loudoun Center Apiaries
Loudoun County Board of Supervisors
Loudoun County Chamber of Commerce

Loudoun Freedom Center
Loudoun County Heritage Commission
Loudoun County Preservation and Conservation Coalition
Loudoun County Public Schools
Loudoun Preservation Society
Loudoun Valley Sheep Producers Association
Loudoun Wildlife Conservancy
Loudoun Historic Village Alliance
Loudoun Mutual Insurance Co.
Loudoun Now
Lovettsville Historical Society
National Park Service
Natural Resources Conservation Service
National Trust for Historic Preservation
Northern Virginia Land Trust

Piedmont Environmental Council
Preservation Virginia
Smith Group, Inc,
Station Auto Wash (Leesburg)
Virginia Department of Historic Resources
Virginia Outdoors Foundation
Virginia Piedmont Heritage Area Association
Visit Loudoun
Walking Wild Herbs
Waterford Baptist Church
Waterford Citizen's Association
Waterford Market
Waterford Elementary PTO
Wegmans Food Markets

Individual Donors

\$1,000 and up (Landmark Society)

Ms. Jill P Beach
Mr. Ronald J. Benschoter & Mr. Glenn J. Jessee, Jr.
Ms. Steffanie Burgevin
Mr. John Caron & Ms. Nancy Doane
Mr. & Mrs. Ronald Dunn
Mr. & Mrs. Kenneth W Getty, Jr.
Mr. & Mrs. J. Chester & Betsy Gibson, III
Ms Christine E. Gleckner & Mr. Clay Steward
Mr. & Mrs. Joe Goode
Dr. & Mrs. Claude C Gravatt, Jr.
Mr. Charles Harenza
Mr. William Hart & Ms. Constance Eaton
Mr. & Mrs. Will Hockersmith
Ms. Cynthia Hull
Mr. & Mrs. James Hutton
Mr. & Mrs. Robert N Jackson
Ms. Rachel Camille Kassaie
Ms. Joan Kowalski
Mr. Ed Lehmann & Ms. Edith Crockett
Mr. Philip D Paschall & Ms. Elizabeth Cox
Dr. & Mrs. Nicholas Ratcliffe
Mr. & Mrs. Marty & Anna Rathmann
Mr. & Mrs. Richard Rogers, Jr.
Mr. & Mrs. John M. Souders
Mr. & Mrs. Mark A. Sutton
Mr. & Mrs. Robert W. Thompson

Mr. & Ms. Robert & Susanne Hale
Mr. & Ms. Peter & Elizabeth Hohm
Mr. Lee Spangler & Mr. Jonathan Daniel
Ms. Stephanie Kenyon
Mr. Kevin MacMillan
Mr. & Mrs. John B. L. McClain
Mr. Randy Nees
Ms. Mary Lou Steptoe
Ms. Susan Sutter
Mr. & Mrs. Michael & Clare Synge
Ms. Mavis Taintor
Ms. Julia Thompson
Mr. & Mrs. Daniel & Courtney Wayland

Ms. Helene McCarron
Ms. Kimberley Partoll
Mr. & Mrs. James H. Robertson, Jr.
Mr. Dino Sammarco
Dr. & Mrs. Ernie J Smith
Ms. Carol Smoots
Ms. Elyssa Wood
Ms. Cate Wyatt
Mr. & Mrs. Craig & Elaina Young
Ms. Eleanor M Adams

\$250 to \$499

Ms. Eleanor M Adams
Ms. Janelle Banta
Mr. James J Behan & Ms. Connie Moore
Mr. & Mrs. Justin & Diane Blue
Mr. & Mrs. Joe & Charlotte Carriker
Mr. & Mrs. Roy E. Chaudet
Mr. & Ms. John & Sally Cox
Mr. Ray Daffner
Mr. & Mrs. Frank J Davis
Ms. Cynthia DiCola
Ms. Sharyn Franck
Mr. & Mrs. C. Edward Good
Mr. & Mrs. Forest & Nicole Hayes
Mr. & Mrs. Neil C Hughes
Mr. & Mrs. Jeff & Robin Jones
Mr. & Mrs. O. Leland Mahan
Mr. & Mrs. Craig Mastapeter

\$100 to \$249

Ms. Jennifer Abbott
Ms. Maureen Arnold
Mrs. Wendy & Paul Augustine
Mr. John Beatty
Dr. & Mrs. William Beaver
Mr. & Mrs. David Bednarik
Ms. A. Anderson Bishop
Mr. and Mrs. Frank and Beth Boland
Ms. Elaine Braccio
Ms. Rachael L. Bradley Montgomery
Mr. & Mrs. Michael Brenton
Ms. Sharon Lee Buchanan
Mr. Brandon Buhler
Mr. Brett Burley
Mr. Thomas Cafferty
Mr. & Mrs. Ronald Campbell
Dr. Donald Campbell
Ms. Whitney Chamberlain
Mr. & Mrs. W. Joseph Coleman, Jr.
Ms. Marie Colosimo

\$500 to \$999

Mr. Robert W Chamberlin
Mr. Thomas N Edmonds & Ms. Schuyler Richardson
Mr. & Ms Michael & Emily Eig

Mr. & Mrs. Anthony M. Colucci
Mr. & Mrs. Eugene Couser
Mr. Michael Cowell & Ms. Patti Psaris
Ms. Natalie Craigmile
Dr. David Crowe
Ms. Robin Dannels
Ms. Judith DeMar
Ms. Paula Dennis
Mr. & Mrs. Howard C. Dew
Mr. Thomas Dill
Ms. Erica Dodson
Mr. & Mrs. Frank Dudek
Mr. Nathan Epling
Mr. & Ms. Kurt & Beth Erickson
Mr. & Ms. Peter & Deborah Evans
Mrs. Janis F Ferrell
Ms. Cheryl Ford
Ms. Mary J Frase
Mr. James Gatz
Mr. & Mrs. Chris J. Gerow
Ms. Jere Gibber
Mr. & Mrs. Richard T Gillespie
Mr. & Mrs. Dennis B. & Priscilla Godfrey
Ms. Marcia Goodman
Mr. William Gordon
Mr. & Mrs. James R Gosses
Mr. Stephen Happeny
Ms. Marilyn Harrington
Mr. & Ms. William & Josephine Henry
Mr. & Mrs. Geary Higgins
Ms. Sarah Holway
Ms. Nancy T. Holway
Ms. Monica Horton
Ms. Tracey Hosseinian
Mr. & Mrs. Jeff Huber
Mr. & Mrs. David P. Hunt
Mr. Isaac Johnson
Mr. & Ms. Jay & Melanie Jordan
Ms. Jill Kadish
Mr. & Mrs. William J. Kenis
Ms. Helen Knowles
Mr. & Mrs. Nick Kozar
Ms. Susan Lake
Mr. & Mrs. Paul & Lee Lawrence
Mr. & Mrs. Pettus & Ellen Metzger LeCompte
Ms. Susan Lee
Leesburg Garden Club
Mrs. Michelle Lewis
Mr. & Mrs. Andrew Lewis, Jr.
Mr. & Ms. William & Susan Manch
Ms. Beverly Mattson
Mr. & Mrs. Bruce McIntosh, II
Mr. & Mrs. Michael Megeath
Mr. & Mrs. Doug & Shannon Mesecar

Mr. & Ms. John & Amanda Metelski
Mr. & Mrs. Richard & Owen Whitlock
Mr. & Mrs. George W. Mitchell
Rev. & Mrs. W. Brown Morton, III
Ms. MaryAnn Naber
Mr. Richard O'Connor
Dr. Kevin P. O'Connor & Ms. Irene Alexine von Keszyczk
Mr. & Mrs. Robert & Priscilla J. O'Donnell
Ms. Cristen Parks
Mr. Wayne Parsons
Mr. & Mrs. Kenneth & Susan Pepper
Ms. Cristen Piper
Ms. Melissa Preston
Mr. & Ms. Paul & Joanne Rastas
Mr. & Mrs. Ed & Melanie Ricart
Mr. & Mrs. Travis & Gene Riddle
Ms. Debbie Robinson
Mr. & Mrs. Doug & Holly Roeder
Mr. David Duncan & Ms. Leigh Roller
Mr. & Mrs. Gerald & Margaret C. Rose
Ms. Barbara Ross-Cersley
Mr. & Mrs. Ronald & Carol L. Rothrock
Mr. & Mrs. John Kevin Ruedisueli
Mr. & Mrs. Norman Sahley
Mr. & Mrs. Jim Schnaible
Ms. Karen K. Schwartz
Ms. Tina Sehgal
Ms. Pam Seik
Mr & Ms. Steve & Sharon Serpati
Mr. Peter A. Silvia
Dr. & Mrs. Steven A Soechtig
Mr. & Mrs. Robert C Sonderman
Mr. & Mrs. Jim & Linda Starmer
Ms. Kathryn A. Steckelberg
Mr. Michael Stup & Ms Paige Cox
Ms. Rachel Swann
Ms. Denise Symes
Dr. & Mrs. Nicholas J & Kristen D Tiscione
Mr. Don Rawlings & Ms. Tracy Kirkman
Mr. and Mrs. Alfred P. Van Huyck
Mr. Frederik 'Erik' Van Weezendonk
Ms. Christine Vanderos
Ms. Antonia F. Walker
Mr. Charles & Katherine Wellford
Mr. Christopher White
Mr. Joesph White
Ms. Elizabeth Whiting
Mr. & Mrs. Jonathan & Inga Woods
Ms Claudia Young
Mr. & Mrs. Richard E. Yourish

Mr. Russell T. Beal
Ms Ann Belland
Ms Louise M Bradford
Mr. & Mrs. Jerry H. Briggs
Mr. & Mrs. David & Carolee Chamberlin
Ms. Joy Anne Crocker
Mr. & Mrs. Herbert & Betty Darnell
Ms Gerri Davis
Mr. Roger Duncan & Ms. Barbara G. Toohill
Ms Karen Fedak
Mr. & Mrs. Dennis & Elaina R Goldrick
Mr. Walter Halfmann
Ms. Joan Henry
Mr. & Mrs. George & Susan Herbert
Mr. & Mrs. Edwin R Hutchinson, Jr.
Mr. & Mrs. Ken & Sharon Katona
Mr. & Mrs. James P Lucier
Ms. Kathleen Lutman
Ms. Mary McFann
Ms. Patricia A. Mogannam
Mr. & Mrs. Joan & Gary O. Molchan
Mr. Patrick J. Mountain
Drs. Charles and Nancy Naeser
Ms. Donna L. Petruska
Mr. Rick Posta
Mr. Rodney Rathmann
Ms. Wendy Roseberry & Mr. Brian Whelan
Mr. John Rowe
Ms. Rebecca Salyers
Ms. Sherry Satin
Ms. Patricia R. Shoaf
Mr. Lee D. Stone
Ms. Lisa Van Alstyne
Mr. & Mrs. Roger & Linda Vasas
Ms. Miriam O. Westervelt
Ms. Charlotte Wilcher

Up to \$100

Ms Cindy Ashley
Mr. and Mrs. Armand and Tracy Balboni

In Memory

Chuck Anderson, January 2020:

We were saddened to learn of the recent passing of longtime Waterford resident Chuck Anderson. Many current residents remember Chuck as the real estate agent who first introduced them to their new Waterford home. Chuck and wife Marie moved to Waterford from Arlington in 1967, establishing their household in the "Pink House" across the street from the Post Office. From his office in the Tin Shop, Chuck's offerings of historic village homes enticed many Waterford visitors through the years. A staunch supporter of the arts, Chuck was a founding member of the Waterford Concert Series, which held its first concert in the old auditorium of the Old School in 1995. Chuck will always be remembered in the village for his colorful personality and friendly greetings.

David Updegrove, January 2020:

David Graham Updegrove (1950-2020), a favorite long time fair performer passed away unexpectedly on January 21, 2020. Dave performed with Dominion4 on the Corner Store Porch which was enjoyed by fair goers for many years. Dave was passionate about many things in his life. His greatest joy was engaging with his grandchildren in playing games, doing chores together, riding bikes, catching crabs, and watching movies. Dave will be remembered for his endless generosity, his constant encouragement, his quick wit, and a dedication to helping anyone in need.

William Hunley, February 2020:

Waterford lost a talented artisan, supporter, neighbor and friend in early March. William H. Hunley has been our gunsmith at the Waterford Fair since 1950, beginning with an ironing board for his booth. For decades, Bill provided demonstrations on rifling a gun barrel, forging flintlock hammers and other early American gunsmithing skills in his gunshop at the Forge on Second Street. In later years Bill was joined by an apprentice and protégé who discovered his love of gunsmithing through Bill's fair demonstrations. In addition to his demonstrations at the Forge, Bill generously opened his unique home "Trouble Enough Indeed" to fairgoers for many years. Visitors were always amazed to learn that the log cabin was constructed out of two salvaged cabins and one frame house over a 10 year period from 1970 to 1980 by Bill and his wife Carol. Bill recorded an oral history in 2014 with the United States Holocaust Museum. In the interview he describes his experiences as a young man in the military during World War II in Europe, his work as a naval architect after the war, and his discovery of and move to Waterford. The recording and transcript are available [here](#).

Madeline MacNeil, March 2020:

Beloved Waterford Fair performer, Madeline "Maddie" Reed MacNeil of Berryville, Virginia, died Sunday, March 22, 2020 at her home. Maddie played the Fair for over 30 years. She loved to talk and teach youngsters about the dulcimer. Her Christmas sing-along, held yearly at the John Wesley Church, was another long-standing tradition for village residents. Born January 17, 1940 in Norfolk, Virginia, Maddie grew up in Richmond, Virginia, and graduated from Douglas Freeman High School. After receiving her bachelor's degree in music education from Longwood College, she taught in Warren County Public Schools. Her solo career in singing began at Wayside Inn in Middletown, Virginia. She also worked as the assistant to the director at Wayside Theater. Maddie sang regularly at Skyland Lodge on the Skyline Drive. It was there that she was introduced to the dulcimer. She performed regularly at the Waterford Festival, Museum of the Shenandoah Valley, Handley Library, and many other Shenandoah Valley locations. She subsequently taught, and performed throughout the United States, and the British Isles. Maddie, her dulcimer and her performances of traditional music will be greatly missed.

Consolidated Statement of Activities

December 31, 2020

- Preliminary -

	<u>Jan - Dec 20</u>
Ordinary Income/Expense	
Income	
Unrestricted Contributions	83,420.96
Restricted Contributions @	102,817.53
Income on Endow (R)	1,997.77
Grant Income (R)	58,475.12
Membership	5,972.00
Special Events, net	9,588.55
Education	17,460.37
Fair Income	21,773.29
Property Rental Income	37,555.00
Other Income	<u>7,692.17</u>
Total Income	<u>344,752.76</u>
Expense	
Fair Expenses	80,515.74
Education Expenses (unrestricted)	52,860.39
Education Expenses (restricted)	4,638.57
Preservation Expenses	188,529.46
Fundraising Expenses	17,797.92
Finance	42,887.77
G&A	40,130.27
Other Expenses	1,062.43
Restricted/grant expenses (R)	7,894.14
Total Expense	<u>430,617.04</u>
Net Ordinary Income	<u>-85,864.28</u>
Other Income/Expense	
Other Income	
Market Adjustment on Endowment	<u>16,575.90</u>
Total Other Income	<u>16,575.90</u>
Net Other Income	<u>16,575.90</u>
Net Income	<u>-69,288.38</u>

Consolidated Statement of Financial Position

Year Ended December 31, 2020

-Preliminary -

	Dec 31, 20	Dec 31, 19	\$ Change	% Change
ASSETS				
Current Assets				
Checking/Savings				
110500 - Checking - Atlantic Union	159,044.48	37,921.97	121,122.52	319.66%
110526 - Paypal	3,931.60	3,032.36	899.24	29.66%
116501 - Endowment - Vanguard	139,079.38	120,805.68	18,273.67	15.11%
116250 - Restricted Acct Atl Union Bank	47,137.57	8,589.56	38,547.91	448.75%
Total Checking/Savings	<u>349,293.03</u>	<u>170,349.57</u>	<u>178,943.46</u>	<u>105.11%</u>
Accounts Receivable				
12500 - Accounts Receivable	688.89	0.00	688.89	100.0%
Total Accounts Receivable	<u>688.89</u>	<u>0.00</u>	<u>688.89</u>	<u>100.0%</u>
Other Current Assets				
118000 - Investment in OSL, LLC	150.00	150.00	0.00	0.0%
130000 - Receivables	0.00	15,385.00	-15,385.00	-100.0%
135200 - Deposit	35,472.00	35,472.00	0.00	0.0%
160000 - Prepaid Expenses	3,441.64	5,405.75	-1,964.11	-36.33%
Total Other Current Assets	<u>39,063.64</u>	<u>56,422.75</u>	<u>-17,359.11</u>	<u>-30.77%</u>
Total Current Assets	<u>389,045.54</u>	<u>226,772.72</u>	<u>162,272.82</u>	<u>71.79%</u>
Fixed Assets				
184000 - Historic Property	6,444,590.40	6,444,590.40	0.00	0.0%
187000 - Furniture & Equipment	59,751.42	59,751.42	0.00	0.0%
187050 - Website	33,910.50	33,910.50	0.00	0.0%
187100 - Historic Furniture	15,250.00	15,250.00	0.00	0.0%
187150 - P Farm Pull Off Area	230,337.48	230,337.48	0.00	0.0%
188000 - Less Accumulated Deprec/Amort	-955,709.94	-865,209.94	-89,500.00	-10.33%
Total Fixed Assets	<u>5,928,129.86</u>	<u>5,917,629.86</u>	<u>89,500.00</u>	<u>+1.51%</u>
TOTAL ASSETS	<u>8,217,175.40</u>	<u>6,144,102.68</u>	<u>2,073,072.72</u>	<u>33.74%</u>
LIABILITIES & NET ASSETS				
Liabilities				
Current Liabilities				
Accounts Payable				
200000 - Accounts Payable	4,586.04	4,916.62	-330.58	-6.72%
Total Accounts Payable	<u>4,586.04</u>	<u>4,916.62</u>	<u>-330.58</u>	<u>-6.72%</u>
Credit Cards				
200100 - Mastercard	1,546.40	2,762.31	-1,215.91	-44.02%
Total Credit Cards	<u>1,546.40</u>	<u>2,762.31</u>	<u>-1,215.91</u>	<u>-44.02%</u>
Other Current Liabilities				
221600 - EIDL Loan	150,000.00	0.00	150,000.00	100.0%
212000 - Payroll Liabilities	2,723.26	6,905.74	-4,182.48	-60.57%
214000 - Accrued Expenses	4,493.18	13,821.02	-9,327.83	-66.77%
218000 - Consignor Liabilities	750.00	0.00	750.00	100.0%
220000 - Notes Payable	197,044.56	204,544.56	-7,500.00	-3.67%
240000 - Deferred Revenue	22,295.00	8,525.00	13,769.00	161.49%
Total Other Current Liabilities	<u>377,306.01</u>	<u>233,496.32</u>	<u>143,809.69</u>	<u>61.69%</u>
Total Current Liabilities	<u>383,438.45</u>	<u>241,177.25</u>	<u>142,261.20</u>	<u>58.99%</u>
Total Liabilities	<u>383,438.45</u>	<u>241,177.25</u>	<u>142,261.20</u>	<u>58.99%</u>
Net Assets				
342500 - Unrestricted - Board Designated	4,638.41	1,588.41	3,050.00	192.02%
340000 - Unrestricted Net Assets	5,768,364.48	5,807,567.66	-39,203.18	-0.68%
345000 - Permanently Restricted Assets	62,310.00	62,310.00	0.00	0.0%
350000 - Temp. Restricted Net Assets	67,722.44	67,822.44	100.00	0.15%
Net Income	<u>-69,288.38</u>	<u>-36,163.18</u>	<u>-33,125.20</u>	<u>-91.6%</u>
Total Equity	<u>5,833,736.95</u>	<u>5,902,925.33</u>	<u>-69,188.38</u>	<u>-1.17%</u>
TOTAL LIABILITIES & NET ASSETS	<u>8,217,175.40</u>	<u>6,144,102.68</u>	<u>2,073,072.72</u>	<u>33.74%</u>



October 1, 2, & 3, 2021
10am – 5pm

Demonstrating Artists & Crafters ♦ Entertainment
♦ Historic Homes Tours ♦ Local Heritage Farmers
♦ Local Foods & Libations ♦ Activities
♦ Fine Art ♦ Historic Reenactors

Set in the historic village of Waterford.

Foundation Members watch for your free tickets,
to be emailed to you in August!

waterfordfairva.org

Follow us on Facebook

Waterford Foundation: [@waterfordfoundation](https://www.facebook.com/waterfordfoundation)

Waterford Fair: [@waterfordfair](https://www.facebook.com/waterfordfair)

Waterford Craft School: [@WaterfordCraftSchool](https://www.facebook.com/WaterfordCraftSchool)



May

*Experimental Baking:
Outdoor Wood-Fired Brick Oven & Gas Grill*

June

*Stack, Fire, Bake:
Building an Outdoor Wood-fired Brick Oven,
Introduction to Stained Glass,
Weaver's Choice:
Shaker Twill Cathead, 12" Apple Basket,
Weaver's Choice (Ages 12+):
8" Apple Basket, Wall Basket*

July

*Handwoven Splint Seat,
Introduction to Broom Making,
Intermediate Stained Glass*

July/August

*Barn Quilt Painting,
Let's Make Paper & Turn it Into a Journal!*

October

Waterford Craft School at the Waterford Fair
*Baking in the Wood-fired Brick Oven,
Splint Birdhouse, Demos & More!*

November Workshop Week

Adjustable Sterling Bracelet & Ring, & More!

craftschool.waterfordfoundation.org

Follow us on Instagram

Waterford Foundation: [@waterfordfdn](https://www.instagram.com/waterfordfdn)

Waterford Fair: [@waterford_fair](https://www.instagram.com/waterford_fair)

Waterford Craft School: [@waterfordcraftschool](https://www.instagram.com/waterfordcraftschool)

Subscribe to our YouTube Channel:

<https://www.youtube.com/channel/UCGaWpgfzsJdkns5C5x6cJeQ/videos>