

Update on the Transmission Line Issue



Waterford
2033

*300 Years of Preservation &
Conservation Through
Innovation*



**Waterford Citizens
Association**

Agenda

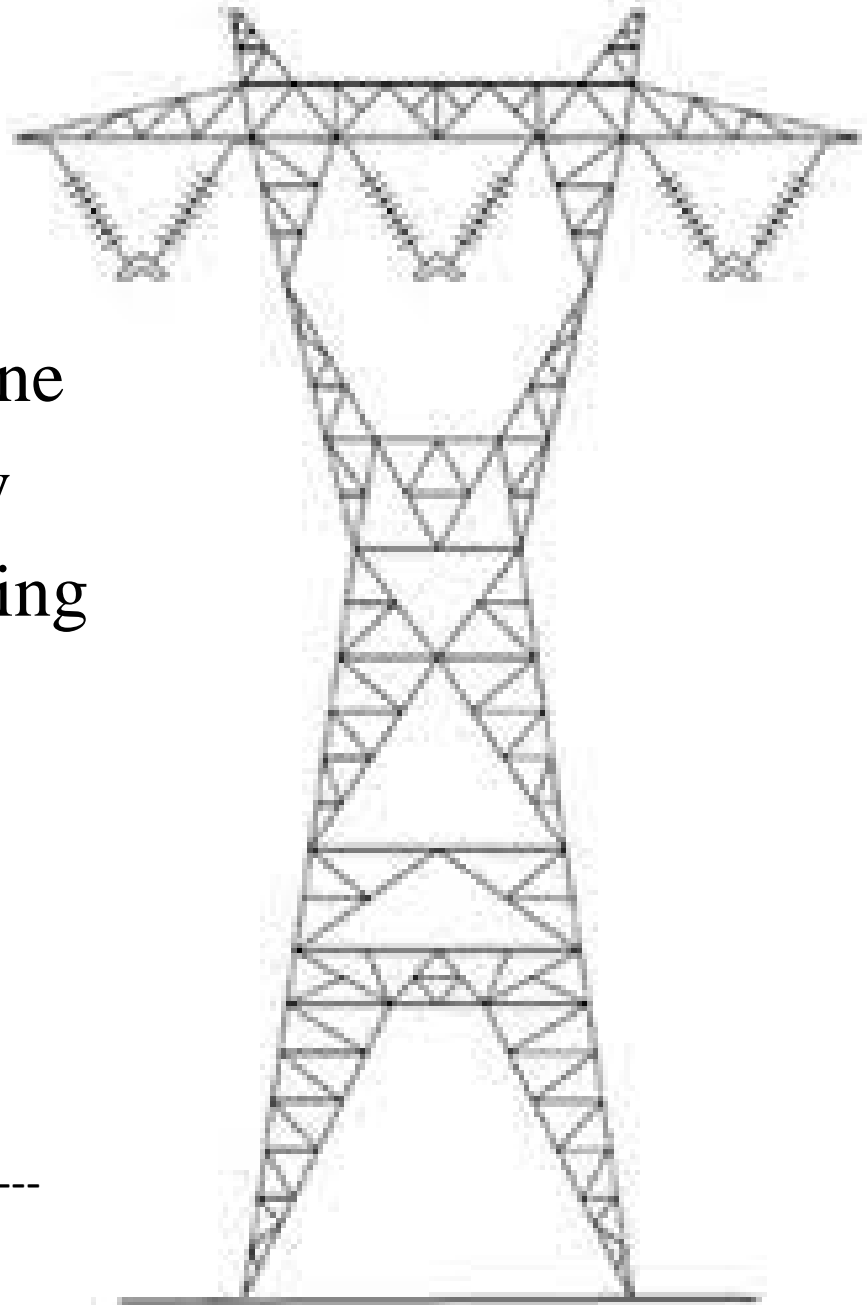
- What we know to date
- Action steps taken
- Initial partners
- Timeline
- How you can help



Power Line Towers

- Single 500 kV overhead transmission line
- Likely 115 – 165 foot wide right of way
- Likely 100 – 300 feet in height, depending on the location
 - 500 kV lines require largest towers
 - 10x or more costly to bury
 - Feasibility to bury >62 kV is not likely

<https://www.pjm.com/-/media/committees-groups/committees/teac/2023/20231031/20231031-item-15---reliability-analysis-update.ashx>



One of Four Proposed Paths for the Line if the Western Path Chosen



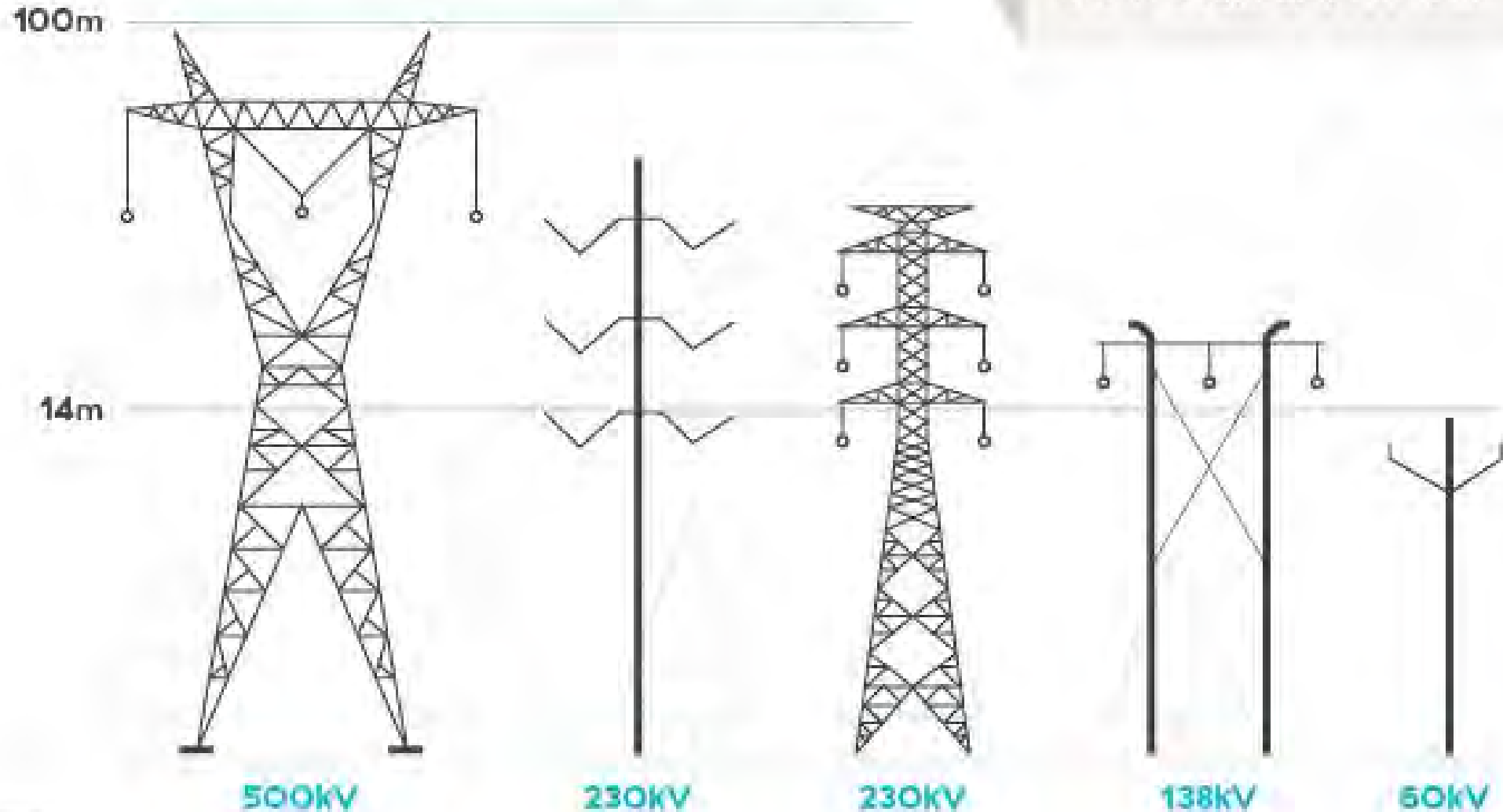
Map credit:
Nick Ratcliffe

Transmission lines

Transmission lines are the big, high voltage power lines that bring electricity from where it's made at our generating stations to substations near communities across B.C.

What's a kV?

kV stands for kilovolt, which is a unit of potential energy.
One kV is equal to 1,000 volts.



In comparison, High St. poles are half this size





500 kV Lines

Phillips Farm – Before and After



PJM's Rationale and State of Data Centers

- Data center load growth – up to 7,500 MW forecasted by 2027 – 28 in Northern Virginia **(one MW can power 250 homes)**
- PJM is responsible for getting power to any ratepayer entity that is a legally approved structure
 - PJM manages power resiliency planning for 13 States
- Virginia is home to more data centers than anywhere else in world
 - Over 2000 centers today
 - Loudoun County approved an additional 12,286,529 sq. ft. and has applications for 10,938,449 sq. ft.

Who Will Decide?

- Once the PJM TEAC group makes its recommendation on December 11, it goes to the **Virginia State Corporation Commission**

Construction and operation of transmission lines and/or facilities above 115 kV in Virginia usually require the issuance of a Certificate of Public Convenience and Necessity (CPCN) from the State Corporation Commission. Staff guidelines on transmission projects that require a CPCN, and Guidelines of Minimum Requirements for Transmission Line Applications, are available among our [guidance documents](#).

- The BOS and local officials are not the decision-makers
- State and Federal Legislators have more influence
- What about the Easements and NHL status as blockers?
 - We are seeking counsel at the State(VOF) and Federal(Dept. Int.)
 - This may require top legal and lobbyist talent

Quote From Geary Higgins, Newly Elected Virginia State Delegate

“I am deeply concerned about the proposed routes for these transmission lines through western Loudoun County. ... It does not appear that these lines in any way service western Loudoun County.”

“This would be similar to running 500 kV power lines through the Gettysburg Battlefield or colonial Williamsburg.”

Our Partners in this Mobilization

- National Park Service
- National Trust for Historic Preservation
- Virginia Outdoors Foundation (PF easement holder)
- Land Trust of Virginia
- VDHR
- Piedmont Environmental Council
- Loudoun Wildlife Conservancy
- Loudoun County Preservation and Conservation Coalition
- Rural Economic Development Council
- Loudoun Heritage Commission
- Journey Through Hallowed Ground
- Virginia State Parks



Timeline (we don't know much)

Project track

- PJM meets to finalize recommendation **Dec. 11**
 - Decision moves to State Corporation Commission and Nexterra, if they are chosen

Additional track

- BOS meets **Dec. 13** at 6:00 pm for public hearing regarding the Zoning Ordinance Rewrite, which recommends changes to the comprehensive plan and zoning that could rein in data center growth
 - Attend, speak, share thoughts on need for plan to manage growth, financing of data centers
- Waterford Foundation will host a 20th Year Celebration of the Phillips Farm
 - **Sunday, Dec. 17 at 3:00 pm – please sign up to help**

What are We Doing?

- Waterford Foundation co-hosted community meeting on Nov. 30
- PJM received over 250 letters objecting to their plan
 - Waterford Foundation, WCA, National Park Service, and **YOU** all sent letters
 - Opposition includes businesses, farmers, vineyards, preservationists, and legislators
- Created web page devoted to this; staff will monitor and add updates
- Will launch comprehensive fund-raising campaign to protect Waterford
- Working with significant partners; I seek guidance on engaging top legal and lobbying talent

What You Can Do



- Monitor our website and stay informed
www.waterfordfoundation.org/transmission-lines/
- Ensure friends and neighbors know about this issue
- Talk to representatives at the local, state, and federal level to support data center reform legislation
- Support the Foundation, which will be the lead mobilizing opposition
 - Attend the 20th Year Phillips Farm Celebration Dec. 17 at 3 pm
 - Please consider donating @ WaterfordFoundation.com/Donate
 - Efforts require staff time, possibly fees for lawyers, lobbyists, publicity
 - <https://www.waterfordfoundation.org/donate/>
 - Volunteer your time and talents – contact me or Stephanie



The Little Village That Could

A 20 Year Celebration Of

Phillips Farm



Sunday December 17th at 3pm
Old School: 40222 Fairfax Street Waterford VA



Join Us for a Celebration
of 20 years of the Phillips
Farm!

- Recognize 20 years of conservation
- Hear the story from the people involved
- Support ongoing preservation work



WFI's 60th Anniversary ~ PIVOT to Raise \$4m in 6 months



Fundraising: Save Waterford Bonds

The Waterford Foundation was started during WW II, when war bonds were a means of increasing public support and funding. As the Foundation launched the campaign we realized that we could re-create the goodwill of donors and hearken back to the days when everyone gave what they could. Hence, we designed, made and delivered individually calligraphied and matted Waterford Bonds for donors who gave \$100 and above.

This effort raised over \$112,000 dollars.

More, it raised the commitment of future supporters and visitors.



Spotlight December 18, 2003



Reaching out to Those who Partnered

