



Waterford  
FOUNDATION, INC.

# 2023 Annual Report

April 16, 2024

**Waterford Foundation Inc.**

P.O. Box 142 Waterford, VA 20197 ♦ 540.882.3018 ♦ www.waterfordfoundation.org ♦ [info@waterfordfoundation.org](mailto:info@waterfordfoundation.org)

**2023 Board of Directors**

**Susan Manch**, President  
**Annie Goode**, Vice President  
**Jane Covington\***, Secretary  
**David Hunt**, Treasurer

**Karen Bennett**  
**Chris Doxey**  
**Sharyn Franck**  
**Grey Frandsen**  
**Emily Houston**  
**Stephanie Kenyon\***  
**Anna Rathmann**  
**Kerry Roszel**  
**Chris Wood**  
**Mike Stup, WCA Ex-Officio**  
 \* resigned prior to end of term

**Mission**

*The mission of the Waterford Foundation is to preserve the historic buildings and the open spaces of the National Historic Landmark District of Waterford, Virginia; and through education, to increase the public’s knowledge of life and work in an early American rural community.*

**Committee Chairs and Co-Chairs**

Development & Special Projects ..... Stephanie Kenyon  
 Education & Collections ..... Sharyn Franck  
     Local History Outreach ..... Bronwen Souders  
     Second Street School Program.....Nancy Iarossi  
     Archives & Local History Collection..... Edith Crockett  
 Fair .....Chris Doxey  
 Finance .....Dave Hunt  
 Preservation ..... Ann Goode  
     Historic Properties and Land Use ..... Karen Bennett  
     Open Space ..... Ann Goode  
 Mill Planning ad hoc ..... Jane Covington / Chris Wood

**Staff**

**Stephanie Thompson**  
 Executive Director  
**Abigail Zurfluh**  
 Historic Preservation Director  
**Tracy Kirkman**  
 Public Programming Director  
**Stacy Kelly**  
 Public Programming Assistant  
**Cerrena Baird**  
 Office Manager / Events  
**Accountant, Joan Molchan**  
 KAV Accounting, LLC

**Retiring Board Member**

Ann Goode returned to the Waterford Foundation Board in 2018, bringing her wealth of experience and expertise in planning and land use issues. Having previously served on the Board as well as a member of the Waterford Foundation staff, her deep institutional knowledge has been an asset to the Foundation for the past six years. Ann has been a strong supporter of the formation and subsequent reorganization of the Preservation Committee, serving as chair of the Committee as well as its Open Lands Subcommittee while also serving as Vice President of the Board. Ann’s expertise and steadfast leadership has enabled the Foundation to make great strides in advancing its preservation mission. We will miss her voice on the Board, but we look forward to her continued active involvement on the Preservation Committee.



---

## President's Report



The past year has been a year of great victories such as the completion of the Mill Stabilization Project, the first pilot run of our new Restoration field trip program, the official acceptance of our updated National Historic Landmark documentation, and the riparian buffer planting on the Schooley Mill property. It has unfortunately also been the source of some worrisome surprises, such as the proposed power transmission line being routed through the Phillips Farm property and the continued presence of poison hemlock and other invasives in our open spaces.

As always, we are thankful for our loyal members, generous donors, and long-time supporters for helping us navigate the challenges we have and continue to face in preserving the sanctity of the National Historic Landmark of Waterford from a variety of threats. With the help of our members, donors, and volunteers, we are working to find solutions to the challenges we currently face.

Beginning in November 2023, the Waterford Foundation took the lead in bringing together non-profits, businesses, landowners, and other interested parties to develop plans to fight the proposed routing of a 500 KV transmission line with up to 200 foot tall towers through the pristine open space and farmland of Rural Loudoun. We formed the Loudoun Transmission Line Alliance to gather opposition, develop a declaration of common goals, and to actively work toward identifying an alternative route that meets the needs of County businesses while protecting historic open spaces critical to Rural Loudoun. Hundreds of people have mobilized to send letters of opposition, communicate with affected communities, post signs, hold meetings, and get the declaration signed by as many people as possible.

In a new development, NextEra Energy has made the unilateral move to apply for sections of the Mid- Atlantic Resiliency Link, including Loudoun County, to be designated as a National Interest Electric Transmission Corridor with the US Department of Energy. According to the Department of Energy, "A NIETC designation also allows the Federal Energy Regulatory Commission (FERC) to issue permits for the siting of transmission lines within the NIETC under circumstances where state siting authorities do not have authority to site the line, have not acted on an application for over one year, or have denied an application." This would allow NextEra to build a new greenfield power corridor anywhere within a wide swath of Rural Loudoun to support the Mid Atlantic Resiliency Link project, even if the State Corporation Commission denies construction in Rural Loudoun.

Our current goals are straightforward. We believe any new power transmission lines should be routed along existing rights of way to minimize the economic, scenic, and environmental impact of these lines. Rural Loudoun is the last agricultural outpost in Northern Virginia that is in close proximity to the District of Columbia. For people who want to eat locally grown foods and meats; for those who want to visit the many historic sites, vineyards, and breweries; and for those who need to find open space in which to enjoy their families and friends, Rural Loudoun is a pristine haven. We are working with Loudoun County to develop and strengthen opposition and drive support for an alternative route.

The Foundation is particularly committed to protecting not only the Landmark, but also the sanctity of historic, preservation, and conservation easements. It is critical that these protections are safe from incursions by utility companies or other interests.

We are working with our State Legislators, County Officials, and Federal authorities to agree on reasonable solutions. It remains to be seen what is ahead of us, but we have a solid plan in place and an army of passionate people ready to push for a fair solution.

---

The Board has worked hard to continue making progress on our five-year strategic plan. While two of our members had to resign due to personal demands on their time this year, we are proud of the things we have to celebrate this year. The Education Committee revived the Lyceum Lecture Series and has hosted programs on Waterford history. This series has attracted strong audiences to date and more is planned. The Mill Stabilization Project was a success thanks to Loudoun County and the Carpenter Beach Construction Firm. Both helped us arrive at the best outcome for the funding we had and it looks wonderful. There is still work to be done, of course, and we have an ad hoc Board Committee working on how we can better utilize the Mill and its environs. We look forward to making more progress towards our strategic goals with the help of our nominated Board candidates.

Respectfully,

Susan Manch, President

---

## Executive Director's Report

In 2023 we set ambitious goals for fundraising, while continuing to grow our education and preservation work. The 7<sup>th</sup> Annual Historic Waterford Trail Run reached over 400 participants and raised nearly \$20,000 with 28 sponsoring businesses, and with over 80 volunteers supporting the event. The Feast With Friends dinner series featured 4 dinners, serving a total of 155 attendees who together helped us raise just under \$20,000 in support of our mission. While we did not meet the ambitious goals we set for ourselves for donations in 2023, program income for the Waterford Fair and the Waterford Craft School met or exceeded our targets. Restructured membership fees and member benefits continue to bring in additional funds while clarifying the philanthropic intent of our supporters.



We continued to strengthen our three signature educational outreach programs: The Waterford Fair, the Waterford Craft School, and the Second Street School Living History Program. The 79<sup>th</sup> Waterford Fair featured 175 artisans, artists, and craftspeople, 14 historic property tours, 29 merchants, and 15 living history exhibits. These offerings were supported by over 425 volunteers and 17 community partners, sponsors, and organizations. The Waterford Craft School hosted 17 classes for adults and served 161 students throughout the year in classes featuring a variety of media including fiber and textiles, wood, glass, food, and mixed media. Four summer camps were held as well as 8 talks and demonstrations at the Waterford Fair.

The Second Street School program hosted 29 classes in 2023 and celebrates its 40<sup>th</sup> year this spring! The revised curriculum offers students more opportunities for critical thinking and exploration about the differences between their school experience and those of Waterford's Black students in 1880. In November, we conducted a successful pilot of our new field trip program for 7<sup>th</sup> grade students that explores Waterford's experience during Reconstruction and into the early 20<sup>th</sup> century. 290 students attended the two-day pilot run, and we were recognized as a Public Educator of the Year by the Virginia Piedmont Heritage Area Association.

Our preservation work received a major boost in August with the hiring of our Historic Preservation Director, Abigail Zurfluh. Abby arrived in the office just as the Mill Stabilization Project was wrapping up with Loudoun County Department of Transportation and Capital Infrastructure, Carpenter Beach Construction, Glave and Holmes architects, and Arbor Ridge Builders. Abby oversaw the riparian buffer planting along Balls Run on the Schooley Mill property, in partnership with the Piedmont Environmental Council and the Loudoun County Soil and Water Conservation District. In addition to these achievements, we also accomplished some smaller

---

painting and repair projects and continued work on controlling the invasives on our properties. Abby has continued to bring her historic preservation training to bear to professionalize and improve our preservation efforts, and we are so grateful to have her join the office.

Tracy Kirkman has flourished as Public Programming Director, overseeing Waterford Fair and Waterford Craft School since last spring and bringing fresh new ideas to the Waterford Craft School while continuing to excel in delivering a highly successful Fair in October. In 2023 she was supported by part-time Public Programming Assistant Shelagh Jessop, who contributed her passion for craft and experience in museum programming to grow and improve Waterford Craft School offerings in 2023. Although Shelagh moved on at the end of 2023, we are fortunate to have her back as a Waterford Craft School instructor in 2024.

Cerrena Baird has continued to bring stability, professionalism, and a welcoming attitude to the office in her role as Office Manager. She will be sorely missed when she leaves the Foundation this May to spend more time at home with her young family, and it will be difficult to find someone to fill Cerrena's shoes.

As I approach the end of my sixth year as Executive Director, reflecting on all those who have contributed to our work in that time, I am grateful that so many have a passion for preserving and sharing Waterford and its history. I appreciate the support of our staff, volunteers, Board and committee members, and other supporters, and I look forward to working together to achieve our goals in 2024.

Respectfully,

Stephanie C. Thompson, Executive Director

---

## Waterford's Updated National Historic Landmark Designation is Official!

After several years of work, our updated National Historic Landmark nomination is complete! See the details on the update as posted on social media by the National Historic Landmark Program: 'On December 13, 2023, Secretary of the Interior Deb Haaland approved updates to the Waterford Historic District National Historic Landmark in Virginia. We're thrilled to share highlights of this important place and to update the stories it tells. Located less than ten miles from Leesburg, Waterford is an exceptionally well-preserved agricultural village that readily illustrates America's pre-urbanized past. What makes this district special is how it includes not just the village core, with its historic grid of streets and buildings, but also more than 1,400 acres of agricultural lands surrounding the village core. The district illustrates, through its history, buildings, and land, the central relationship between agrarian life and rural service-oriented villages that dominated the American landscape in the eighteenth and nineteenth centuries. First designated in 1970, Waterford is also recognized for its pioneering historic preservation efforts beginning in the 1940s and continuing today. The inclusion of agricultural lands in the 1970 NHL designation was innovative and ambitious for the time. Waterford residents have long spearheaded its preservation, engaging with professionals and making use of powerful techniques to retain the district's historic character. NHL designation honors both the landmark itself and the individuals and organizations who created and used it. Congratulations to the site stewards and advocates who preserve, protect, and interpret this historic place!'

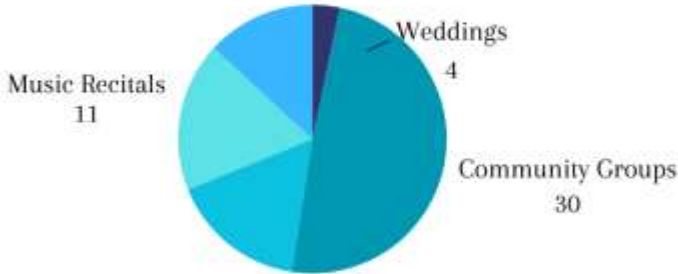
Thank you to everyone involved in Waterford's re-designation!



2023  
**Waterford**  
 FOUNDATION, INC.  
 Preservation - Properties

**61 Short-Term Rentals**

Theater / Concerts  
 8



Hourly Rentals  
 10



Income Generated

**\$36,326**

**Long-Term Rentals**



**\$36,475**

Income

**PRCS Partnership**



Income Generated

**\$3,691.50**

**16** Events

**157**

Participants

**Paid Preservation Projects**



Painting of original Old School building exterior

**Volunteer Preservation Projects**



Heating repairs in Second Street School

Plumbing repairs at the John Wesley Church & Mill

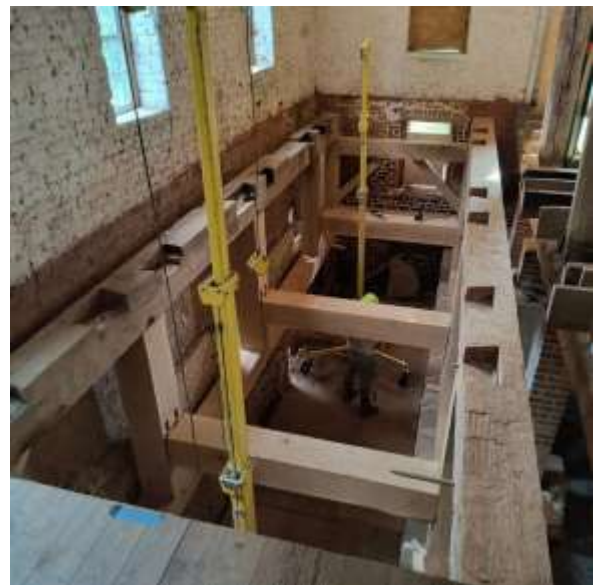


Carpentry repairs at the Chair Factory

New woodstove donated and installed in Forge



[waterfordfoundation.org](http://waterfordfoundation.org)





2023  
**Waterford**  
FOUNDATION, INC.

Preservation - Open Spaces

### Citizen Science

Water Quality  
Bluebirds  
Butterfly count  
Amphibians  
Bird Count  
Bat monitoring



### Projects



Continued invasive treatments  
of Poison Hemlock  
on the Phillips Farm



**600** trees planted

Planted Riparian buffer  
along Catoctin creek  
at Schooley Mill

**5** different species



New pedestrian access gate  
at Phillips Farm pull-off



### Volunteers



Creek cleaning vessel tested at  
Catoctin Creek on Phillips Farm

Bags of mile-a-minute vines  
removed from Phillips Farm



**30**  
volunteers



[waterfordfoundation.org](http://waterfordfoundation.org)



2023  
**Waterford**  
FOUNDATION, INC.  
Development

**Fundraising**



**Historic Waterford Trail Run**

April 22, 2023



411 runners

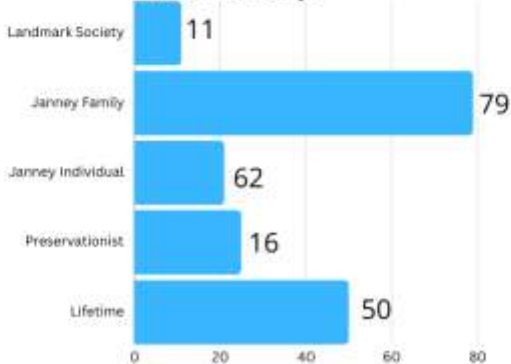


28 sponsors



80 volunteers

**Membership**



Memberships  
\$24,295

[waterfordfoundation.org](http://waterfordfoundation.org)



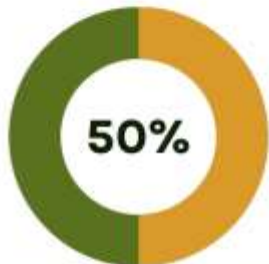


# Waterford FOUNDATION, INC.

Education 2023



## Waterford CRAFT SCHOOL



Instructors That Are Also Fair Demonstrating Artisans

From North Carolina  
STUDENT WHO TRAVELLED THE FURTHEST

# of Classes

15

In-person

8

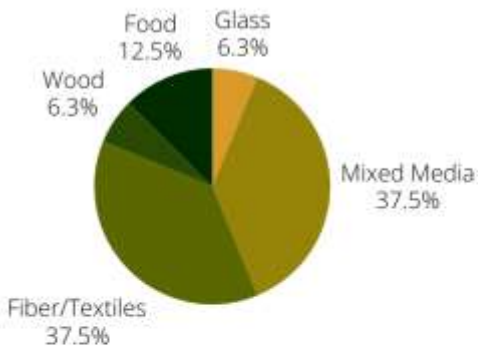
Fair

2

Off-site

4

Summer Camps



Classes by Medium



Outreach

7

E-Newsletters

2

Off-site Events



[craftschool.waterfordfoundation.org](http://craftschool.waterfordfoundation.org)

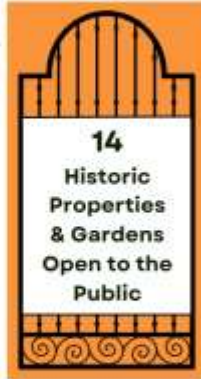
# 2023 Waterford Fair

A 79-Year Tradition!

**175 Artisans, Artists & Craftspeople**



- 64 Demonstrating Artisan
- 49 Fine Artists
- 54 Old Mill Artisans & Bakers
- 8 Dried Flower Crafters



**NEW**



**GARDEN TOUR FEATURE**  
International Floral Designer & Waterford's Hope Farm owner Holly Chapple lead a **FLORAL DESIGN CHALLENGE!**

**425+ Volunteers**

It takes more than a village to put on the Fair!



Publicity Reach: 218,983,784



**29 Merchants**

- 12 Local Farms & Producers
- 11 Food Purveyors
- 6 Libation Merchants



**17**

Community Partners  
Sponsors  
Civic Organizations

**15**

LIVING HISTORY EXHIBITS



Ranked 27th in USA!



Photo credit: Laura Shaw

---

## Members and Committee Service

A – Archives	D – Development	E – Education	F – Fair	Fi – Finance	P – Preservation
OL – Open Lands	HPLU – Historic Properties and Land Use		M – Mill Ad Hoc		

### Lifetime Members

*Until 1993, a lifetime member designation was conferred on individuals who contributed \$1,000 or more, or granted an easement on a property within the National Historic Landmark. We thank these generous donors.*

David Anderson	Bowman Cutter	Douglass Lea
David Banker	Edward Davis	Lang Lloveras
Jill Beach	John DeCourcy	Spencer MacCallum
Geraldine Brooks	John Donovan	Timothy McLean
William Burch	S. Diane El-Shafey	Brown Morton
Forest Byers	Mercedes Eyssell	Margaret Morton
Ellen Casolaro	Bertram Firestone	L Carlton Mosteller
Carolee Chamberlin	Timothy Glidden	Esther Murphy
Constance Chamberlin	Kevin Goeller	Tim Murphy
Cordelia Chamberlin	Jose Gomez	Charles Norris
David Chamberlin	H Harper	Susan Oaks
John Chamberlin	Elaine Head	Paul Rose
Robert Chamberlin	Richard Head	Annette Scheel
Taylor Chamberlin	Daniel Holland	Eugene Scheel
Robert Charles	William Holter	Robbie Smith
Rachel Chewning	Lyman Hull	Pamela Storch
Bruce Clendenin	Thomas Jewell	Leo Sullivan
Elizabeth O. Colton	Ellen Kellner	Gladys Tartiere
Abigail Cutter	H Layton Laws	Mrs. James L. Wiley

### Landmark Society Members (\$1,000)

Paul Bateman (P, HPLU)	Nancy Doane (M)	Christine Gleckner
Karen Bennett (P, HPLU)	Grey Frandsen (F)	Nancy Iarossi (E)
Michael Bennett (P, OL)	Lindsey Frandsen	Robert Jackson
John Caron	Bonnie Getty	Lee Spangler
Jonathan Daniel (P, HPLU)	Ken Getty	Clay Steward

### Janney Society, Family (\$150)

Nicholas Acheson	Craig Banta	Richard Biby
Charles Africano	Janelle Banta	Aaron Bickart
Lynne Anderson	Carrie Beach (P, OL)	Heidi Bickart
Scott Anderson	Charlie Beach	Andrew Black
Erik Arnold	Marlena Beach	Candice Black
Maureen Arnold	Jeff Bean	Diane Blue
Greg Avila	David Bednarik	Justin Blue
Jeanne Avila	Peggy Bednarik (F)	Elaine Braccio
Donna Bannister	Angela Berzonsky	Bonnie Branding

---

John Branding	Paul Greer	Craig Mastapeter
Patrick Brown	Sara Greer	Mary Mastapeter
Jeff Browning	Casey Gustowarow	Bill Mayer
Donald Campbell	Robert Hale	Timothy McGinn (M)
Stacy Carlberg	Susanne Hale	Jean McIntosh
Charlotte Carriker	Julie Harner	Mary Ellen Megeath
Joseph Carriker	William Hart	Mike Megeath
Christopher Chamberlain	Yvonne Hasenei	Robert Meighan
Whitney Chamberlain	Kathy Healy	Laura Morar
Constance Chatfield-Taylor	Michael Healy	Abbie Morris
Roy Chaudet (F)	Andrew Heironimus	Robert Morton
Kay Chewing	Colleen Heironimus	Mark Newsom
Katie Christiansen	Josephine Henry	Amelia O'Connor
Bill Clarke	William Henry	Cristen Parks
Betsy Coffey-Chaudet	Christy Hertel	Kimberley Partoll
Betsy Coffey-Chaudet	Tom Hertel	Philip Paschall
Marie Colosimo	Elizabeth Hipfel	C.J. Pellerin
Anthony Colucci	Liz Hohm (D)	Ken Pepper
Jane Covington (M)	Pete Hohm	Susan Pepper
Elizabeth Cox	Monica Horton	Melissa Preston
Edith Crockett (A, E)	Charles Houston	Lara Profitt
John Didzbalis	Emily Houston (F)	George Rambo
Julie Didzbalis	David Hunt (Fi)	Joanne Rastas
Andrew Diffenderfer	Gail Hunt	Paul Rastas
Jennifer Diffenderfer	Corinne Jacques	Donald Rawlings
Thomas Dill	Katie Johnson	Marty Rendon
Erica Dodson	Jill Kadish	Kevin Reudisueli
Matthew Donnelly	Ken Katona	Karl Riedel
Lee Dorsch	Sharon Katona	Katherine Riedel
Steve Dorsch	Lawrence Kelly	Gwendolyn Robinson
Chris Doxey (F, Fi)	William Kenis	Doug Roeder
Dave Doxey	Stephanie Kenyon (D)	Holly Roeder
Frank Dudek	Tracy Kirkman	Leigh Roller
David Duncan	Joan Kowalski	Dev Roszel
Connie Eaton	Nick Kozar	Kerry Roszel (D)
Megan Fackel	Sharon Kozar	Dino Sammarco
Virginia Friend	Roger Lancaster (P, HPLU)	Katie Sammarco
Richard Gillespie	Manuela Learmont	Donald Sargent
Tracy Gillespie	Ellen Metzger LeCompte	Pat Sartorius
Dennis Godfrey	Pettus LeCompte	Joseph Scalione
Priscilla Godfrey	Ed Lehmann (F)	Carl Scheider (P, OL)
Ed Good	Luke MacDonald	Jim Schnaible (F)
Margaret Good	Bill Manch (Fi)	Linda Schnaible
Annie Goode (P, OL)	Susan Manch (D, Fi, M)	Charles Schnieder
Joe Goode (Fi)	Alex Marcus	Laura Shaw
Jacqueline Gosses	Charlotte Marcus	Alan Siek
Jim Gosses	David Martens	Pam Siek
Ann Gravatt	R. John Martin	Pat Silverman

---

---

Steven Soechtig  
Bronwen Souders (E)  
John Souders  
Dana Storm  
Mark Sutton  
Melissa Sutton  
Denise Symes  
Clare Synge  
Michael Synge  
Beverly Teague  
Becky Tennant  
David Tennant  
Simon Thomas  
Julia Thompson  
Robert W. Thompson

Samuel Thompson  
Stephanie Thompson  
Kristen Tiscione  
Nicholas Tiscione  
Andrew Umhau  
Frederik Van Weezendonk  
Christine Vandoros  
Melanie Vangsnæs  
Peter Vangsnæs  
Antonia Walker  
Robert Wavra  
Joseph Webster  
Tammi Webster  
Glenn Wever  
John White

Jane Williams (A, E)  
Nyna Williams  
Christopher Wood (F, M)  
Elyssa Wood  
Inga Woods  
Jonathan Woods  
Claudia Young  
Craig Young  
Elaina Young  
Joe Young  
Gwen Zimmerman  
Thomas Zimmerman  
Debbie Zungoli (A, E)

### Janney Society, Individual (\$75)

Ann Belland (A, E, P, OL)  
Ron Benschoter (M)  
Alix Burns  
Jon Burton  
Jennifer Chase  
David Crowe  
Robin Dannels  
Cynthia DiCola  
JC Dodson  
Roger Duncan  
Michael Endres  
Nathan Epling  
Sharyn Franck (A, E)  
Marilyn Gentry

Michael Gillen  
Mary Hayford  
Kenneth Hinman  
Mercedes Hodge  
Kathleen Hughes  
Susan Maloney  
Beverly Mattson  
Sue McGuire  
William McGuire  
Laureen Megan  
Frances Millhouser  
Patricia Mogannam  
Nancy Naeser  
Margaret Noel

Priscilla J. O'Donnell  
Robert O'Donnell  
Bridget Odell  
Timothy Odell  
Martin Pemberton  
Rodney Rathmann  
Parekh Ruchi  
Kathryn Steckelberg  
Camilla Strongin  
Susan Sutter (F)  
Barbara G. Toohill  
Cate Wyatt

### Preservationists (\$50)

Pamela Austrich  
Steffanie Burgevin  
Nelson Burton  
Skip Couser  
Theresa Crowley  
Barbara Elbeze  
Janis Ferrell  
Betsy Gibson (F)  
Marjorie Glennan  
Debra Gutenson

Meredith Imwalle  
Kathryn Irwin  
Linda Jewell  
Helen Knowles  
Andrew Lewis  
Linda Lewis  
Mark Meinke  
George Mitchell  
John Parks  
Kathie Ratcliffe

Nick Ratcliffe (P, OL)  
Anna Rathman  
Debbie Robison  
Elizabeth Schellenger  
Rick Seale  
Kathy Smith  
Roger Smith  
Mary Wetherbee  
Charlotte Wilcher

---

## Grantors

Community Foundation for Loudoun and Northern Fauquier Counties  
- Charles Tiffany Richardson Family Fund  
- Van Huyck Chockley Family Foundation  
Elizabeth Coffey Trust  
Kimberly Partoll Family Foundation

Loudoun County Soil and Water Conservation District  
Renaissance Charitable Foundation  
The Cedars Foundation  
Visit Loudoun

## Matching Gifts

*The Waterford Foundation is grateful to the corporations who offer matching gift programs to their employees.*

ExxonMobil Foundation

Google

## Business and Organization Donors

BOWA  
Browning Equipment  
Carrington Builders  
Catocin Presbyterian Church  
CloudHQ  
Country Buick GMC  
Di Severia Management Services  
Foundation Direct  
Holder Construction Group

Inertial Labs, Inc  
Interbuild, Inc  
Jennifer Jule Studios  
Kevin Fox Health & Fitness  
Lansdowne Animal Hospital  
Loudoun County Milling Co.  
Loudoun Mutual Insurance Company  
Lovettsville Cooperative Market  
NV Pools, Inc

OfferLogix, LLC  
Office Anesthesia Services, LLC  
Rebecca Wellborn, Pearson Smith Realty  
Road Yachts, LLC  
Waterford Concert Series  
Wegmans  
Wheatland Spring Farm + Brewery  
William A. Hazel, Inc.  
Xtreme Painting & Remodeling LLC

## Strategic Partners

Catocin Presbyterian Church  
Community Foundation of Loudoun  
and Northern Fauquier Counties  
County of Loudoun  
Hamilton Fire & Rescue  
Journey Through Hallowed Ground  
Land Trust Alliance  
Land Trust of Virginia  
Loudoun Archaeological Foundation  
Loudoun Center Apiaries  
Loudoun County Board of Supervisors  
Loudoun County Chamber of Commerce  
Loudoun County Heritage Commission  
Loudoun County Parks & Recreation

Loudoun County Preservation and  
Conservation Coalition  
Loudoun County Public Schools  
Loudoun Freedom Center  
Loudoun Historic Village Alliance  
Loudoun Preservation Society  
Loudoun Valley Sheep Producers Association  
Loudoun Wildlife Conservancy  
Lovettsville Historical Society  
National Park Service  
National Trust for Historic Preservation  
Natural Resources Conservation Service  
Northern Virginia Land Trust  
Piedmont Environmental Council

Preservation Virginia  
Scouts BSA  
StoryCorps  
The American Chestnut Foundation  
The Commonwealth Transportation Board  
Virginia Department of Historic Resources  
Virginia Outdoors Foundation  
Virginia Piedmont Heritage Area Association  
Virginia Tourism Corporation  
Visit Loudoun  
Waterford Baptist Church  
Waterford Citizen's Association  
Waterford Elementary PTO  
Waterford Market

## Individual Donors

### ***\$1,000 and up***

Marguerite Bateman  
Paul Bateman  
Karen Bennett

Michael Bennett  
John Caron  
Robert Chamberlin  
Paige Cox

Edith Crockett  
Jonathan Daniel  
Nancy Doane  
Connie Eaton

Karen Eldridge Powers  
Janis Ferrell  
Grey Frandsen  
Lindsey Frandsen

Bonnie Getty	Abigail Cutter	Jerry Briggs	Ken Pepper
Kenneth Getty, Jr.	Bowman Cutter	Tara Briggs	Susan Pepper
Christine Gleckner	Chris Doxey	Gabriella Burke	Timothy Plante
Annie Goode	Dave Doxey	Jessica Cannon	Schuyler Richardson
Joe Goode	Emily Eig	Charlotte Carriker	Karl Riedel
Ann Gravatt	Michael Eig	Joseph Carriker	Katherine Riedel
William Hart	Sharyn Franck	Roy Chaudet	Dev Roszel
Nancy Iarossi	Betsy Gibson	Lori Chew	Kerry Roszel
Judy Jackson	J. Chester Gibson, III	Betsy Coffey-Chaudet	Teresa Rowe
Robert Jackson	Robert Hale	Marie Colosimo	Dino Sammarco
Stephanie Kenyon	Susanne Hale	John Cox	Katie Sammarco
Joan Kowalski	Christy Hertel	Sally Cox	Carl Scheider
Ed Lehmann	Tom Hertel	Erin Curtolo	Jim Schnaible
Bill Manch	Patricia Hess	Ray Daffner	Linda Schnaible
Susan Manch	Wayne Hess	Richard Darr	Anne Sheehan
Bill Mayer	Susan Honig-Rogers	Thomas Dill	Robert Stewart
Jean McIntosh	Laurie Hudicek	Jayne Dorsett	Clare Synge
Eric Novotny	Kathleen Hughes	Thomas Edmonds	Michael Synge
Tara Novotny	Lee Lawrence	Barbara Elbeze	Christy Tallamy
Kathie Ratcliffe	William Paul Lawrence	Loren Fossum	Colleen West
Nick Ratcliffe	Kevin MacMillan	William Gordon	Annalee Whitehead
Anna Rathman	Helen Norman	Mia Gross	Jane Williams
Martin Rathman	Frank Palmer	Yvonne Hasenei	
Pat Sartorius	Debbie Robison	David Hastman	<b>\$100 to \$249</b>
Bronwen Souders	Richard Rogers	Sara Hawkins	Eleanor Adams
John Souders	Joseph Scalione	Jade Heshmatpour	Scott Anderson
Lee Spangler	Charles Schnieder	Liz Hohm	Erik Arnold
Clay Steward	Paul Schorn	Pete Hohm	Maureen Arnold
Camilla Strongin	Tracy Schorn	Nicole Jackson	Cindy Ashley
Mike Stup	Jennifer Stanford	Martha Kelley	Greg Avila
Mark Sutton	Alfred Van Huyck	Ally Kirkpatrick	Jeanne Avila
Melissa Sutton	Glenn Weaver	Roger Lancaster	Deborah Avis
Mavis Taintor	Joseph Webster	Ellen Metzger LeCompte	Randy Avis
Zebulon Taintor	Tammi Webster	Pettus LeCompte	Carrie Beach
Robert W. Thompson		Nelina Loiselle	Charlie Beach
Stephanie Thompson	<b>\$250 to \$499</b>	Sue McGuire	Marlena Beach
Glenn Wever	Nicholas Acheson	William McGuire	Russell T Beal
Carmel Wood	Christy Alexander	Gael McPherson Post	Jeff Bean
Christopher Wood	Kelsey Alford	Doug Mesecar	David Bednarik
Elyssa Wood	Rebecca Barber	Shannon Mesecar	Peggy Bednarik
	Jill Beach	Shauna Moore	James Behan
<b>\$500 to \$999</b>	Richard Biby	Randy Nees	Ann Belland
Lynne Anderson	Diane Blue	Timothy Odell	Kevin Billings
Joseph Barti	Justin Blue	Stephen Olsen	Janice Bowlds
James Bond	Beth Boland	Cristen Parks	Elaine Braccio
Windy Bond	Frank Boland	David Parks	Bonnie Branding
Jane Covington	Michael Brenton	C.J. Pellerin	John Branding
Brooke Croft	Sally Brenton		Patrick Brown

---

Brandon Buhler	Gail Hunt	Carol L. Rothrock	Robin Dannels
Brett Burley	Jill Kadish	Ronald Rothrock	Kevin Degnan
Carolee Chamberlin	Ken Katona	Deborah Salem	Brian Demar
David Chamberlin	Sharon Katona	Cynthia Sano	Judith Demar
Kimberly Chewning	Lawrence Kelly	Donald Sargent	Roger Duncan
W. Joseph Coleman	William Kenis	Elizabeth Schellenger	Marilyn Gentry
Anthony Colucci	Tracy Kirkman	Deborah Schlarmann	Marjorie Glennan
Brad Covington	Christine Kirsch	Glenn Schlarmann	Dennis Goldrick
Suzanne Covington	Helen Knowles	Pamela Scott	Elaina Goldrick
Michael Cowell	Angie Kollman	Sharon Serpati	Adam Groenhout
Elizabeth Cox	Andrew Lewis	Steve Serpati	Mary Hayford
Dawn Craig	Gladys Lewis	Laura Shaw	Kathy Healy
Kent Craig	Luke MacDonald	Alan Siek	Michael Healy
David Crowe	Mark Malick	Pam Siek	Kelvin Henderson
Paula Dennis	Alex Marcus	Pat Silverman	George Herbert
Wayne Dennis	Charlotte Marcus	Nicole Sroka	Susan Herbert
Harriet Dickerson	R. John Martin	Cheryl Strasser	Kenneth Hinman
Andrew Diffenderfer	Craig Mastapeter	Susan Sutter	Will Hockersmith
Jennifer Diffenderfer	Mary Mastapeter	Denise Symes	Mercedes Hodge
Christine Dixon	Beverly Mattson	Becky Tennant	Sheryl Hovey
Lee Dorsch	Mary McFann	David Tennant	Edwin Hutchinson Jr
Steve Dorsch	Mary Ellen Megeath	Simon Thomas	Meredith Imwalle
Frank Dudek	Mike Megeath	Kristen Tiscione	Kathryn Irwin
David Duncan	Connie Moore	Nicholas Tiscione	Linda Lewis
Michael Endres	Laura Morar	Irene Alexine von Keszycki	Kathleen Lutman
Deborah Evans	Robert Morton	John White	Laureen Megan
Peter Evans	Patrick Mountain	Nyna Williams	George Mitchell
Daniel Fackel	Mark Newsom	Claudia Young	Patricia Mogannam
Megan Fackel	Kevin O'Connor	Craig Young	Margaret Noel
Alan Ford	Philip Paschall	Elaina Young	Priscilla O'Donnell
Mary Frase	Melissa Preston	Joe Young	Robert O'Donnell
Jere Gibber	Patti Psaris	Debbie Zungoli	Rene Pachinbhayag
Michael Gillen	George Rambo		Bonnie Painter
Dennis Godfrey	Joanne Rastas	<b>Up to \$100</b>	Kym Peacock
Priscilla Godfrey	Paul Rastas	Sharon Adrian	Martin Pemberton
C. Edward Good	Dawn Rathmann	Pamela Austrich	Amy Piatt
Margaret Good	Rodney Rathmann	Britton Baine	Parekh Ruchi
Casey Gustowarow	Don Rawlings	Stephanie Banks	Kathy Smith
Julie Harner	Marty Rendon	Ronald Benschoter	Roger Smith
Marilyn Harrington	Kevin Reudisueli	Steffanie Burgevin	Barbara G. Toohill
Josephine Henry	Alice Roberts	Jon Burton	Mary Wetherbee
William Henry	Gwendolyn Robinson	Nelson Burton	Cat Wyatt
Nancy Holway	Morgan Robinson	Thomas Cafferty	Cate Wyatt
Monica Horton	Doug Roeder	Joseph Carson	
Charles Houston	Holly Roeder	Jennifer Chase	
Emily Houston	Leigh Roller	William Couch	
Cynthia Hull	Margaret Rose	Eugene Couser	
David Hunt	Barbara Ross-Cersley	Theresa Crowley	

---

**Consolidated Statement of Activities**  
December 31, 2023

**UNAUDITED**

	<b>Jan - Dec 23</b>
<b>Ordinary Income/Expense</b>	
<b>Income</b>	
Unrestricted Contributions	\$ 84,345
Restricted Contributions	12,289
Public Programming	257,944
Restr. Income on Endowment	4,276
Membership	24,445
Grant Income	6,045
Property Rental	68,304
Education	34,129
Special Events	39,044
Other	7,571
<b>Total Income</b>	<b>\$ 538,392</b>
<b>Expense</b>	
Public Programming	\$ 238,154
Education Expenses	63,355
Preservation Expenses	190,626
Fundraising Expenses	22,527
Finance	43,007
G & A	36,631
Restricted	-
Depreciation	90,742
<b>Total Expense</b>	<b>\$ 685,042</b>
<b>Net Ordinary Income</b>	<b>(146,650)</b>
<b>Other Income/Expense</b>	
<b>Other Income</b>	
Market Adjustment on Endowment	19,478
<b>Total Other Income</b>	<b>19,478</b>
<b>Net Other Income</b>	<b>19,478</b>
<b>Net Income</b>	<b>(127,172)</b>

Consolidated Statement of Financial Position  
December 31, 2023

UNAUDITED

		<b>Dec 31, 23</b>
<b>ASSETS</b>		
<b>Current Assets</b>		
<b>Checking/Savings</b>		
Checking	\$	111,784
CD - AUB		35,000
Restricted Acct Atl Union Bank		9,090
Endowment - Vanguard		164,536
<b>Total Checking/Savings</b>		320,410
<b>Other Current Assets</b>		
Investment in OSL, LLC		150
Receivables		6,408
Mill Project Deposit		35,472
Prepaid Expenses		4,040
<b>Total Other Current Assets</b>		46,068
<b>Total Current Assets</b>		366,478
<b>Fixed Assets</b>		
Historic Property		6,479,053
Furniture & Equipment		60,356
Website		38,211
Historic Furniture		15,250
Phillips Farm Pull Off Area		230,337
Less Accumulated Deprec/Amort		(1,212,501)
<b>Total Fixed Assets</b>		5,810,708
<b>TOTAL ASSETS</b>		<b>\$ 5,977,184</b>
<b>LIABILITIES &amp; NET ASSETS</b>		
<b>Liabilities</b>		
<b>Current Liabilities</b>		
Accounts Payable	\$	10,790
Credit Cards		2,158
<b>Other Current Liabilities</b>		
Payroll Liabilities		3,782
Accrued Expenses		18,471
EIDL Loan		145,851
Deferred Revenue		10,650
<b>Total Other Current Liabilities</b>		178,754
<b>Total Current Liabilities</b>		191,702
<b>Total Liabilities</b>		191,702
<b>Net Assets</b>		
Unrestricted Net Assets		5,605,196
Unrestricted - Board Designated		1,588
Permanently Restricted Assets		63,240
Temp. Restricted Net Assets		115,458
<b>Total Net Assets</b>		5,785,482
<b>TOTAL LIABILITIES &amp; NET ASSETS</b>		<b>\$ 5,977,184</b>

# SOCIAL MEDIA REPORT 2023

@waterfordfdn  
@waterford\_fair  
@waterfordcraftschool



@WATERFORDFDN

@WATERFORD\_FAIR

@WATERFORDCRAFTSCHOOL



1330 Followers  
356 Posts



1463 Followers  
123 Posts



671 Followers  
98 Posts



2750 Followers  
363 Posts



3400 Followers  
189 Posts



665 Followers  
80 Posts



## In Memoriam: Bruce McIntosh



On March 28, 2023, the Waterford Foundation lost a long-time supporter and good friend, Bruce McIntosh. Bruce operated a thriving farm in Waterford and as a local farmer, he played a critical role helping the Waterford Foundation nurture the relationship between the village and the agricultural community. He understood our mission to preserve that relationship and always supported the Foundation's efforts. When the Fair wanted to plant a demonstration garden exhibiting crops that would have grown in Loudoun County in the 1800 and 1900s, Bruce stepped up to make that happen (even digging the garden patch by hand). He served on the Foundation's Board of Directors for two terms. When the Foundation purchased the Phillips Farm, he immediately offered to rent it. A year later, he offered to double his rent payment. He repaired fences, maintained a haying operation on the farm and got it ready for the Fair. As a member of the Phillips Farm Committee, his understanding of the land and wildlife were essential to our stewardship of the property's agricultural and ecological values. When haying, he avoided the riparian buffer areas and cutting the milkweed needed by the Monarch butterflies. He eradicated the invasive thistle without use of herbicides. He understood the easement on the land and farmed it according to the easement requirements. The Foundation is fortunate that Bruce's family plans to continue his legacy and like them, we will miss him.



**Waterford**  
FOUNDATION, INC.

## EVENTS & PROGRAMS



HISTORIC  
**Waterford**

Trail Run/Walk

April 20th

[waterfordfoundation.org/events](http://waterfordfoundation.org/events)

**Waterford**  
CRAFT SCHOOL

2024 Workshops & Day Camps

March - August

[waterfordcraftschool.coursestorm.com](http://waterfordcraftschool.coursestorm.com)

**Waterford**

ON THE ROCKS

Cocktails in the Landmark

May 11 | June 22 | September 21 | October 5

[waterfordfoundation.org/waterfordontherocks](http://waterfordfoundation.org/waterfordontherocks)

**Waterford**  
*Fair*

Historic Properties Tours & Fine  
Craft Show

October 4th, 5th, & 6th

[waterfordfairva.org](http://waterfordfairva.org)

Your support and participation helps  
ensure the success of our mission!

[waterfordfoundation.org](http://waterfordfoundation.org)

R  
U  
N



L  
E  
A  
R  
N



R  
E  
L  
A  
X



P  
L  
A  
Y

